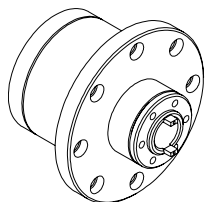


Tooling System

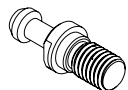
刀桿系統

E

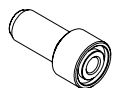




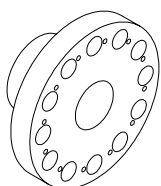
Every Type And Spindles
各類主軸



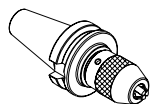
Pull Stud 拉栓
E-90-92



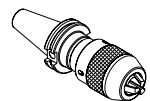
Coolant Pipe
冷卻導管 E-90



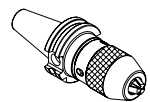
Tool Holders
刀座



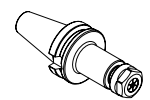
BT CHU CNC DRILL CHUCK
BT 直結式鑽夾頭 E-78



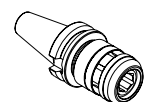
CAT CHU CNC DRILL CHUCK
CAT 直結式鑽夾頭 E-85



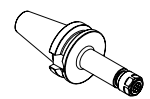
SK CHU CNC DRILL CHUCK
SK 直結式鑽夾頭 E-86



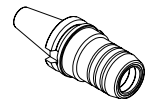
BT ER COLLET CHUCK
BT 刀把 ER 立銑式 E-79-80



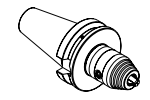
BT MILLING CHUCK
BT 強力式立銑刀把 E-83



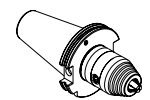
BT CHUCK For High-Speed Machining
BT 高速刀桿 - 高速加工專用 E-81-82



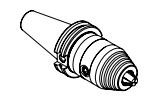
Hydraulic Tool-Holder
油壓刀桿 E-84



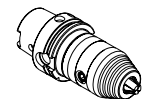
BT Hex Key Drill Chuck
BT 齒輪式夾頭 E-87



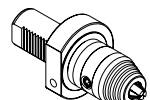
SK Hex Key Drill Chuck
SK 齒輪式夾頭 E-87



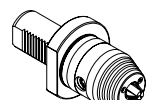
CAT Hex Key Drill Chuck
CAT 齒輪式夾頭 E-89



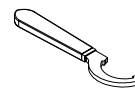
HSK Hex Key Drill Chuck
HSK 齒輪式夾頭 E-88



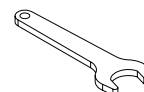
VDI Hex Key Drill Chuck
VDI 齒輪式夾頭 E-88



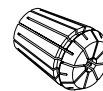
VDI Hex Key Drill Chuck
(with spray nozzles)
VDI 噴水頭型 E-88



Hook Wrench
勾板手 A-22



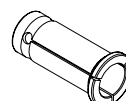
ER Spanner
ER 板手 E-108



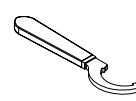
ER SPRING COLLET
ER 彈性筒夾 E-93-96



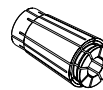
ER NUTS
ER 螺帽 E-107



STRAIGHT COLLET
直筒式彈性筒夾 E-103-104



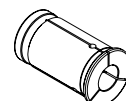
C- Hook Wrench
C 型勾板手 E-108



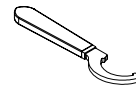
SK SPRING COLLET
SK 彈性筒夾 E-97-98



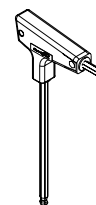
SK NUTS
SK 螺帽 E-107



HYDRAULIC STRAIGHT COLLET
D/DC- 油壓筒夾 E-105-106



SK- Hook Wrench
SK 勾板手 E-108



Hex Key Spanner
齒輪式板手 A-26

BT CHU CNC DRILL CHUCK

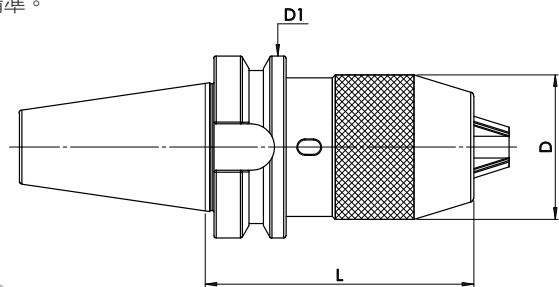
BT直結式鑽夾頭 BT Shank JIS B 6339 (MAS 403 BT)

■ Application / 產品適用

- The product can be adapted for the general lathe or the drilling processing whose machines center can supply with BT spindle.
- 適用於傳統銑床或其他提供 BT 主軸介面 之工作母機作鑽孔加工。

■ Feature / 特點

- 3 times better clamping capacity, comparing to keyed drill chucks.
- The drill bit won't be loosen or falling off.
- Twice precision than the keyed drill chucks.
- The drill chuck is interchangeable.
- 比普通夾頭多 3 倍的夾持力。
- 鑽頭不會鬆脫或掉落。
- 比普通夾頭多出 2 倍精準。
- 可替換式的夾頭。



Code No. 型號	TYPE 規格	L	D	D1	Spanner No. 扳手編號
BA2BT30042075A	BT30×CHU8- 75	75	37	46	BA12808000001A
BA2BT30043090A	BT30×CHU13-90	90	50		BA128130000001A
BA2BT40042085A	BT40×CHU8- 85	85	37	63	BA128080000001A
BA2BT40043095A	BT40×CHU13-95	95	50		BA128130000001A
BA2BT40044120A	BT40×CHU16-120	120	57		BA128160000001A
BA2BT50043110A	BT50×CHU13- 110	110	50	100	BA128130000001A
BA2BT50044110A	BT50×CHU16-110	110	57		BA128160000001A

* Custom-built products are available on request.

Drill Chuck Torque		
	CHUCKING	Torque(kgf-m)
Keyless Chuck	Hand	0.7kgf-m
CP CHU Chuck	Hand	0.7kgf-m
CP CHU+WRENCH	Wrench	2.2kgf-m

BT ER COLLET CHUCK

BT刀把ER立銑式 BT Shank JIS B 6339 (MAS 403 BT) with Collet Chuck DIN 6499

Application / 產品適用

- The product can be applied for end mills, drill bits, drill reamers, taps, and can clamp any straight cutters and tools.
- 本產品可應用於銑刀，鑽頭，鉸刀，絲攻及可夾持任何直柄的刀具及工具。

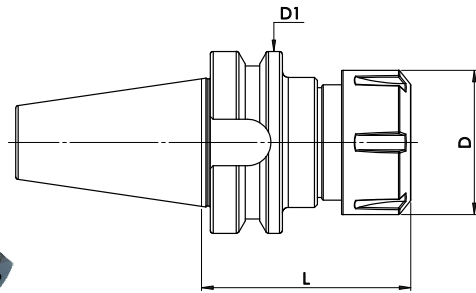


Fig.1

Fig.2



Option 選配品		
E-90-92	E-93-96	E-108

Code No. 型號	TYPE 規格	L	D	D1	Spanner No. 扳手編號	Fig	
BA2BT30022060C	BT30×ER11- 60	60	19	46	BA2ER11020001A	1	
BA2BT30023060C	BT30×ER16- 60	60	28		BA2ER16020001A		
BA2BT30023100C	BT30×ER16- 100	100	28		BA2ER20020001A		
BA2BT30024060C	BT30×ER20- 60	60	34		BA2ER25100001A		
BA2BT30024100C	BT30×ER20- 100	100	34		BA2ER32100001A		
BA2BT30105060C	BT30×ER25- 60	60	42		BA2ER11020001A		2
BA2BT30105100C	BT30×ER25- 100	100	42		BA2ER16020001A		
BA2BT30106070C	BT30×ER32- 70	70	50		BA2ER20020001A		
BA2BT30106100C	BT30×ER32- 100	100	50		BA2ER25100001A		
BA2BT40022070C	BT40×ER11- 70	70	19		BA2ER32100001A		
BA2BT40022100C	BT40×ER11- 100	100	19	BA2ER40100001A			
BA2BT40023070C	BT40×ER16- 70	70	28	BA2ER40100001A			
BA2BT40023100C	BT40×ER16- 100	100	28	BA2ER50100001A			
BA2BT40024070C	BT40×ER20- 70	70	34	BA2ER50100001A			
BA2BT40024100C	BT40×ER20- 100	100	34	BA2ER50100001A			
BA2BT40105070C	BT40×ER25- 70	70	42	63	BA2ER50100001A		
BA2BT40105100C	BT40×ER25-100	100	42		BA2ER50100001A		
BA2BT40106070C	BT40×ER32- 70	70	50		BA2ER50100001A		
BA2BT40106100C	BT40×ER32- 100	100	50		BA2ER50100001A		
BA2BT40107070C	BT40×ER40- 70	70	63		BA2ER50100001A		
BA2BT40107100C	BT40×ER40- 100	100	63		BA2ER50100001A		
BA2BT40108090C	BT40×ER50- 90	90	78		BA2ER50100001A		
BA2BT40108100C	BT40×ER50- 100	100	78		BA2ER50100001A		

* Custom-built products are available on request.

BT ER COLLET CHUCK

BT 刀把 ER立銑式 BT Shank JIS B 6339 (MAS 403 BT) with Collet Chuck DIN 6499

■ Application / 產品適用

- The product can be applied for end mills, drill bits, drill reamers, taps, and can clamp any straight cutters and tools.
- 本產品可應用於銑刀，鑽頭，鉸刀，絲攻及可夾持任何直柄的刀具及工具。



Fig.1

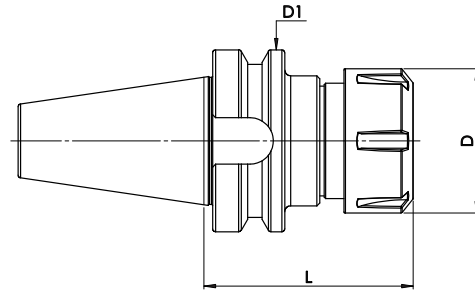


Fig.2



Tightening Torque ER 刀桿 (鎖緊力值)	
TYPE 規格	N-m 單位
ER11	25±10
ER16	60±10
ER20	90±10
ER25	90±10
ER32	100±10
ER40	110±10
ER50	120±10

Code No. 型號	TYPE 規格	L	D	D1	Spanner No. 扳手編號	Fig
BA2BT50023070C	BT50×ER16- 70	70	28	100	BA2ER16020001A BA2ER20020001A	1
BA2BT50023100C	BT50×ER16- 100	100				
BA2BT50024070C	BT50×ER20- 70	70	34			
BA2BT50024105C	BT50×ER20- 105	105				
BA2BT50105070C	BT50×ER25- 70	70	42		BA2ER20020001A BA2ER32100001A BA2ER40100001A BA2ER50100001A	2
BA2BT50105105C	BT50×ER25- 105	105				
BA2BT50106080C	BT50×ER32- 80	80	50			
BA2BT50106100C	BT50×ER32- 100	100				
BA2BT50107080C	BT50×ER40- 80	80	63			
BA2BT50108100C	BT50×ER50- 100	100				
BA2BT50108120C	BT50×ER50- 120	120	78			

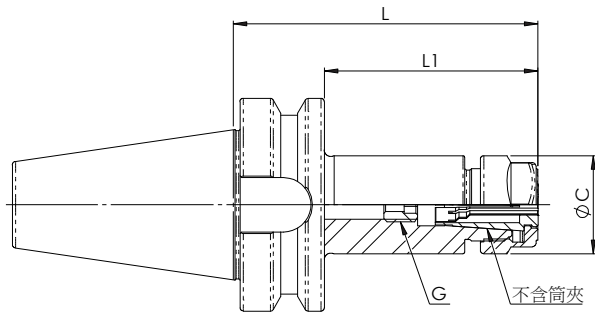
* Custom-built products are available on request.

BT CHUCK For High-Speed Machining

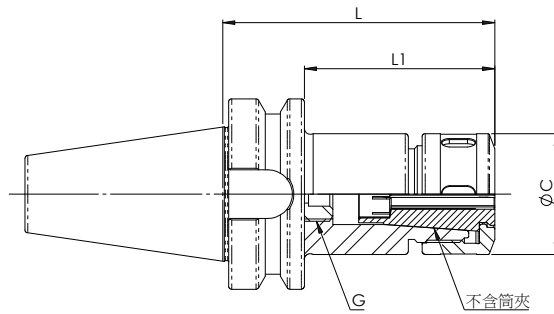
BT高速刀桿-高速加工專用

■ Application / 產品適用

- To prevent vibration and reduces noise by SK Nut(Notch-Free).
- High Rigidity · High Accuracy · High Clamping Force
- 藉由 SK 螺母 (無溝槽), 可避免加工時的晃動及降低噪音。
- 高剛性 · 高精度 · 高夾持力



(SK6 · SK10)



(SK13 · SK16 · SK20 · SK25)

BT CHUCK For High-Speed Machining

BT高速刀桿-高速加工專用



Tightening Torque SK 刀桿 (鎖緊力值)	
TYPE 規格	N-m 單位
SK6	25±5
SK10	45±5
SK13	45±5
SK16	55±5
SK20	60±5
SK25	60±5

Code No. 型號	TYPE 規格	L	L1	ΦC	G	Collet
BA2BT30251060B	BT30-SK 6- 60	60	38	19.7	M8	SK6
BA2BT30251090B	BT30-SK 6- 90	90	68			
BA2BT30252060B	BT30-SK10- 60	60	38			
BA2BT30252090B	BT30-SK10- 90	90	68	29	M12	SK10
BA2BT30254060B	BT30-SK16- 60	60	38			
BA2BT30254090B	BT30-SK16- 90	90	68			
BA2BT30255060B	BT30-SK20- 60	60	38	48.5	M22	SK20
BA2BT30256060B	BT30-SK25- 90	90	68			
BA2BT40251060B	BT40-SK 6- 60	60	33			
BA2BT40251090B	BT40-SK 6- 90	90	63	19.7	M8	SK6
BA2BT40251120B	BT40-SK 6- 120	120	93			
BA2BT40252060B	BT40-SK10- 60	60	33			
BA2BT40252090B	BT40-SK10- 90	90	63	29	M12	SK10
BA2BT40252120B	BT40-SK10-120	120	93			
BA2BT40252150B	BT40-SK10-150	150	123			
BA2BT40254060B	BT40-SK16- 60	60	33	40	M18	SK16
BA2BT40254090B	BT40-SK16- 90	90	63			
BA2BT40254105B	BT40-SK16- 105	105	78			
BA2BT40254120B	BT40-SK16- 120	120	93	40	M18	SK16
BA2BT40254135B	BT40-SK16- 135	135	108			
BA2BT40254150B	BT40-SK16- 150	150	123			
BA2BT40254190B	BT40-SK16- 190	190	163	48.5	M22	SK20
BA2BT40255060B	BT40-SK20- 60	60	33			
BA2BT40255090B	BT40-SK20- 90	90	63			
BA2BT40255120B	BT40-SK20- 120	120	93	55	M28	SK25
BA2BT40255150B	BT40-SK20- 150	150	123			
BA2BT40256080B	BT40-SK25- 90	90	63			
BA2BT40256120B	BT40-SK25- 120	120	93	19.7	M8	SK6
BA2BT50251100B	BT50-SK 6-100	100	62			
BA2BT50251150B	BT50-SK 6-150	150	112			
BA2BT50252100B	BT50-SK10-100	100	62	29	M12	SK10
BA2BT50252150B	BT50-SK10-150	150	112			
BA2BT50254100B	BT50-SK16-100	100	62			
BA2BT50254150B	BT50-SK16-150	150	112	40	M18	SK16
BA2BT50254200B	BT50-SK16-200	200	62			
BA2BT50255100B	BT50-SK20-100	100	112			
BA2BT50255150B	BT50-SK20-150	150	62	48.5	M22	SK20
BA2BT50255200B	BT50-SK20-200	200	112			
BA2BT50256100B	BT50-SK25-100	100	62			
BA2BT50256150B	BT50-SK25-150	150	112	55	M28	SK25
BA2BT50256200B	BT50-SK25-200	200	162			

* Custom-built products are available on request. (BT, HSK, SK, NT, CAT Type) * 特製品可依客戶需求訂製
* 螺帽與扳手選配參考 (P.109 頁) * 筒夾選配參考 (P.103)

BT MILLING CHUCK

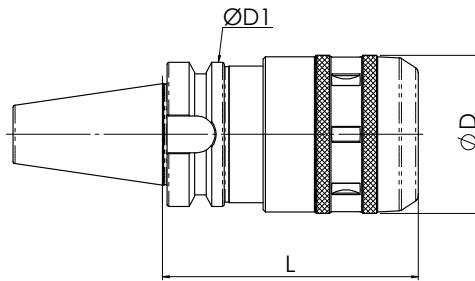
BT 強力式立銑刀把 BT Shank JIS B 6339 (MAS 403 BT)

■ Application / 產品適用

- The Milling chuck can be applied for heavy-duty & higher accuracy cutting.
- 此強力銑刀把適用重型及高精密切削。

■ Feature / 特點

- It is designed with inner rolling needles inside. This design can reduce the friction resistance when tightening and the wear of parts.
- The design of dustproof can prevent iron scrap dropping and extend longevity of chuck.
- The high clamping force is available. The product can prevent the cutting tools from slipping when the users worked it and increase the longevity of cutting tools.
- High rigidity · High precision
- 內部滾針設計，可減少鎖緊時之摩阻力及零件磨耗。
- 防塵設計減少鐵屑掉入以延長使用壽命。
- 高夾持力，防止刀具於加工時滑脫，增加刀具壽命。
- 高剛性 · 高精密



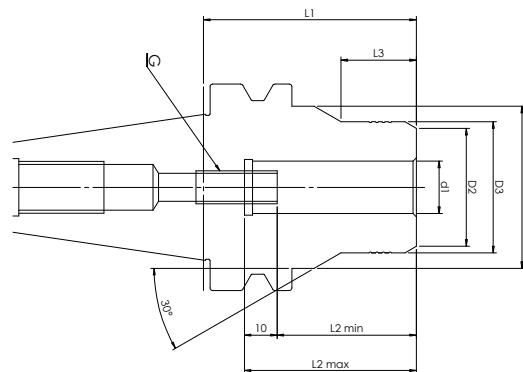
Code No. 型號	TYPE 規格	L	D	D1	Spanner No. 扳手編號
BA2BT30032001A	BT30×C20- 80	80	52	46	BA20C20030001A
BA2BT30032501A	BT30×C25- 85	85	60		BA20C25030001A
BA2BT40032001A	BT40×C20- 85	85	52	63	BA20C20030001A
BA2BT40032002A	BT40×C20- 100	100			BA20C20030001A
BA2BT40032003A	BT40×C20- 135	135	60	63	BA20C25030001A
BA2BT40032501A	BT40×C25- 90	90			BA20C25030001A
BA2BT40032502A	BT40×C25- 135	135	69	63	BA20C32030001A
BA2BT40033202A	BT40×C32- 105	105			BA20C32030001A
BA2BT40033203A	BT40×C32- 135	135	52	100	BA20C20030001A
BA2BT50032001A	BT50×C20- 105	105			BA20C20030001A
BA2BT50032002A	BT50×C20- 150	150	60	100	BA20C25030001A
BA2BT50032501A	BT50×C25- 100	100			BA20C25030001A
BA2BT50032502A	BT50×C25- 150	150	69	100	BA20C32030001A
BA2BT50033201A	BT50×C32- 110	110			BA20C32030001A
BA2BT50033202A	BT50×C32- 135	135	86	100	BA20C42030001A
BA2BT50034201A	BT50×C42- 110	110			BA20C42030001A
BA2BT50034203A	BT50×C42- 135	135			

* Custom-built products are available on request.

Hydraulic Tool-Holder 油壓刀桿

■ Application / 產品適用

- Reliable for clamping reiteration.
- High Rigidity.
- High Accuracy; No Collet used.
- High Clamping Force.
- Our hydraulic chuck can obtain the run-out within 3µm (T.I.R.) at the position 4d1 from the nose.
- 重複夾持可靠。
- 高剛性。
- 高精度，因不需使用筒夾。
- 高夾持力。
- 在使用 4d1 倍長時，精度為 0.003µm。



Code No. 型號	TYPE 規格	d1	D2	D3	D4	L1	L2		L3	G
							Min	Max		
BA2BT40080065A	BT40×CHY6-65	6	26	29	49.5	65	27.5	37.5	23	M5
BA2BT40081065A	BT40×CHY8-65	8	27	30		65	27.5	37.5	23	M6
BA2BT40082065A	BT40×CHY10-65	10	29	32		65	32.5	42.5	23	M8×1
BA2BT40083065A	BT40×CHY 12-65	12	31	34		65	37.5	47.5	23	M8×1 M10×1 M10×1 M10×1 M16×1 M16×1
BA2BT40084065A	BT40×CHY14-65	14	33	36		65	37.5	47.5	23	
BA2BT40085065A	BT40×CHY 16-65	16	36	40		65	42.5	52.5	23	
BA2BT40086065A	BT40×CHY18-65	18	38	42		65	42.5	52.5	23	
BA2BT40087065A	BT40×CHY20-65	20	40	44		65	42.5	52.5	23	
BA2BT40088100A	BT40×CHY25-100	25	55	60	-	100	51	61	-	
BA2BT40089105A	BT40×CHY32-105	32	58	63	-	105	55	61	-	
BA2BT50080090A	BT50×CHY6- 90	6	26	29	49.5	90	37.5	27.5	30	M5
BA2BT50081090A	BT50×CHY8- 90	8	27	30		90	37.5	27.5	30	M6
BA2BT50082090A	BT50×CHY10- 90	10	29	32		90	42.5	32.5	30	M8×1
BA2BT50083090A	BT50×CHY12- 90	12	31	34		90	47.5	37.5	30	M8×1
BA2BT50084090A	BT50×CHY14- 90	14	33	36	63	90	47.5	37.5	30	M10×1
BA2BT50085090A	BT50×CHY16- 90	16	36	40		90	52.5	42.5	30	M10×1
BA2BT50086090A	BT50×CHY18- 90	18	38	42		90	52.5	42.5	30	M10×1
BA2BT50087090A	BT50×CHY20- 90	20	40	44		90	52.5	42.5	30	M10×1
BA2BT50088105A	BT50×CHY25-105	25	55	60	-	105	61	51	67	M16×1
BA2BT50089090A	BT50×CHY32- 90	32	58	63	-	90	65	55	52	M16×1

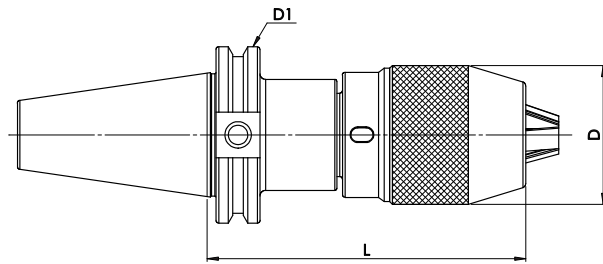
* Custom-built products are available on request. (BT, HSK, SK, NT, CAT Type) * 特製品可依客戶需求訂製

CAT CHU CNC DRILL CHUCK

CAT直結式鑽夾頭 CAT Shank ANSI B5.50

■ Feature / 特點

- 3 times better clamping capacity, comparing to keyed drill chucks.
- The drill bit won't be loosen or falling off.
- Twice precision than the keyed drill chucks.
- The drill chuck is interchangeable.
- 比普通夾頭多 3 倍的夾持力。
- 鑽頭不會鬆脫或掉落。
- 比普通夾頭多出 2 倍標準。
- 可替換式的夾頭。



INCH SIZE 英制

Code No. 型號	TYPE 規格	L	D	D1	Spanner No. 扳手編號
BA2CT30042085A	CAT30×CHU 8-3.347	3.347	1.456	1.812	BA12808000001A
BA2CT40042085A	CAT40×CHU 8-3.228	3.228	1.456	2.5	BA12808000001A
BA2CT40043115A	CAT40×CHU 13-4.527	4.527	1.968	2.5	BA12813000001A
BA2CT40044120A	CAT40×CHU 16-4.724	4.724	2.244	2.5	BA12816000001A
BA2CT50043090A	CAT50×CHU 13-3.54	3.54	1.968	3.875	BA12813000001A
BA2CT50044095A	CAT50×CHU 16-3.7	3.7	2.244	3.875	BA12816000001A

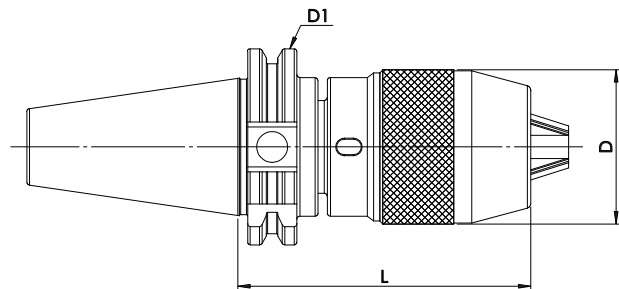
* Custom-built products are available on request.

SK CHU CNC DRILL CHUCK

SK直結式鑽夾頭 SK Shank DIN 69871-A

■ Feature / 特點

- 3 times better clamping capacity, comparing to keyed drill chucks.
- The drill bit won't be loosen or falling off.
- Twice precision than the keyed drill chucks.
- The drill chuck is interchangeable.
- 比普通夾頭多 3 倍的夾持力。
- 鑽頭不會鬆脫或掉落。
- 比普通夾頭多出 2 倍精準。
- 可替換式的夾頭。

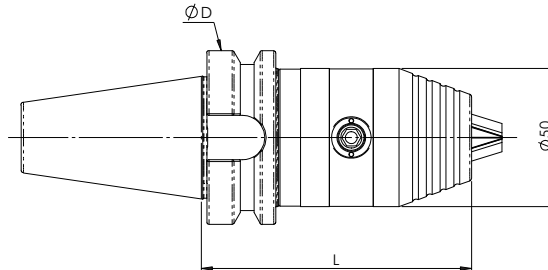


Code No. 型號	TYPE 規格	L	D	D1	Spanner No. 扳手編號
BA2SK30042080A	SK30×CHU8-84	84	37	50	BA12808000001A
BA2SK30043100A	SK30×CHU13-100	100	50		BA12813000001A
BA2SK30044125A	SK30×CHU16-125	125	57		BA12816000001A
BA2SK40042075A	SK40×CHU8-75	75	37	63.55	BA12808000001A
BA2SK40043100A	SK40×CHU13-100	100	50		BA12813000001A
BA2SK40044115A	SK40×CHU16-115	115	57		BA12816000001A
BA2SK50043100A	SK50×CHU13-100	100	50	97.5	BA12813000001A
BA2SK50044105A	SK50×CHU16-105	105	57		BA12816000001A

* Custom-built products are available on request.

BT Hex Key Drill Chuck MAS 403 (JIS B 6339)

BT齒輪式夾頭

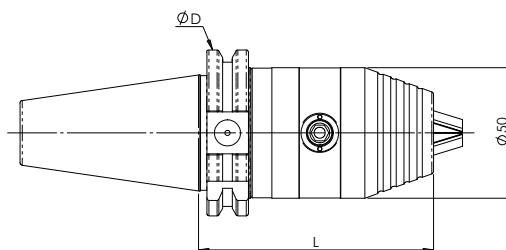


Code No. 型號	TYPE 規格	夾持範圍 Capacity		L	ΦD	Spanner No. 扳手編號	Weight (g) 重量
		mm	inch				
BA2BT30223201A	BT30×GHK13S-100	1-13	3/64-1/2	100	46	BA2BTC0008201A	1450
BA2BT30224201A	BT30×GHK16S-105	2.5-16	3/32-5/8	105	46		1460
BA2BT40223201A	BT40×GHK13S-100	1-13	3/64-1/2	100	63		1990
BA2BT40224201A	BT40×GHK16S-105	2.5-16	3/32-5/8	105	63		1990
BA2BT50223201A	BT50×GHK13S-110	1-13	3/64-1/2	110	100		4500
BA2BT50224201A	BT50×GHK16S-115	2.5-16	3/32-5/8	115	100		4360

* Custom-built products are available on request.

SK Hex Key Drill Chuck

SK齒輪式夾頭 DIN 69871

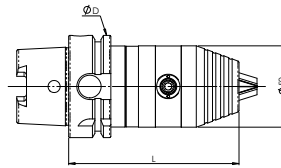


Code No. 型號	TYPE 規格	夾持範圍 Capacity		L	ΦD	Spanner No. 扳手編號	Weight (g) 重量
		mm	inch				
BA2SK40223201A	SK40×GHK13S-90	1-13	3/64-1/2	90	63.55	BA2BTC0008201A	1810
BA2SK40224201A	SK40×GHK16S-95	2.5-16	3/32-5/8	95	63.55		1830
BA2SK50223201A	SK50×GHK13S-90	1-13	3/64-1/2	90	97.5		3390
BA2SK50224201A	SK50×GHK16S-95	2.5-16	3/32-5/8	95	97.5		3280

* Custom-built products are available on request.

HSK Hex Key Drill Chuck (DIN69893)

HSK齒輪式夾頭

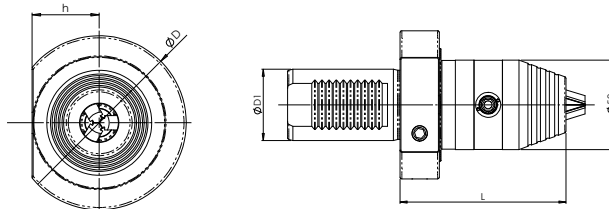


Code No. 型號	TYPE 規格	夾持範圍 Capacity		L	ΦD	Spanner No. 扳手編號	Weight (g) 重量
		mm	inch				
BA2HK32221201A	HSK32A×GHK8S-90	0.5-8	1/64-5/16	90	32	六角扳手 -4mm	
BA2HK40221201A	HSK40A×GHK8S-90	0.5-8	1/64-5/16	90	40		
BA2HK40223201A	HSK40A×GHK13S-121	1-13	3/64-1/2	121	50	BA2BTC0008201A	
BA2HK40224201A	HSK40A×GHK16S-126	2.5-16	3/32-5/8	126			
BA2HK50221201A	HSK50A×GHK8S-90	0.5-8	1/64-5/16	90	50	六角扳手 -4mm	-
BA2HK50223201A	HSK50A×GHK13S-116	1-13	3/64-1/2	116		BA2BTC0008201A	
BA2HK50224201A	HSK50A×GHK16S-121	2.5-16	3/32-5/8	121	63	六角扳手 -4mm	1800
BA2HK63221201A	HSK63A×GHK8S-85	0.5-8	1/64-5/16	85			
BA2HK63223201A	HSK63A×GHK13S-105	1-13	3/64-1/2	105	100	BA2BTC0008201A	
BA2HK63224201A	HSK63A×GHK16S-110	2.5-16	3/32-5/8	110			
BA2HK10223201A	HSK100A×GHK13S-112L	1-13	3/64-1/2	112	100		
BA2HK10224201A	HSK100A×GHK16S-117L	2.5-16	3/32-5/8	117			

* Custom-built products are available on request.

VDI Hex Key Drill Chuck (DIN 69880-1)

VDI齒輪式夾頭

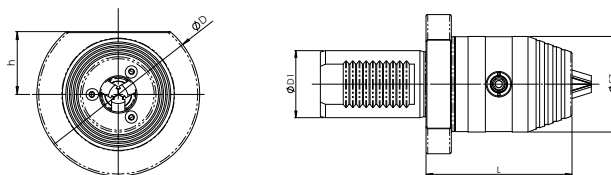


Code No. 型號	TYPE 規格	夾持範圍 Capacity		L	ΦD	h	ΦD1	Spanner No. 扳手編號	Weight (g) 重量
		mm	inch						
BA2VD30223201A	VDI30×GHK13S-93	1-13	3/64-1/2	93	68	28	30	BA2BTC0008201A	1790
BA2VD30224201A	VDI30×GHK16S-98	2.5-16	3/32-1/2	98	68	28	30		1760
BA2VD40223201A	VDI40×GHK13S-93	1-13	3/64-1/2	93	83	32	40		2500
BA2VD40224201A	VDI40×GHK16S-98	2.5-16	3/32-5/8	98	83	32	40		2500

* Custom-built products are available on request.

VDI Hex Key Drill Chuck(with spray nozzles)

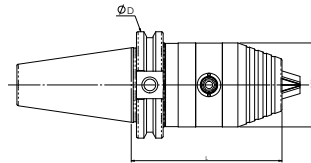
VDI噴水頭型



Code No. 型號	TYPE 規格	夾持範圍 Capacity		L	ΦD	h	ΦD1	Spanner No. 扳手編號	Weight (g) 重量
		mm	inch						
BA2VD302231N2B	VDI30×GHK13S-87L	1-13	3/64-1/2	87	68	28	30	BA2BTC0008201A	
BA2VD302241N2B	VDI30×GHK16S-92L	2.5-16	3/32-5/8	92	68	28	30		
BA2VD402231N2B	VDI40×GHK13S-87L	1-13	3/64-1/2	87	83	32	40		
BA2VD402241N2B	VDI40×GHK16S-92L	2.5-16	3/32-5/8	92	83	32	40		

CAT Hex Key Drill Chuck

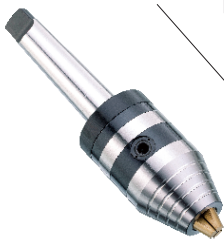
齒輪夾頭刀桿



Code No. 型號	TYPE 規格	夾持範圍 Capacity		L	ΦD	Spanner No. 扳手編號
		mm	inch			
BA2CT40223202A	CAT40xGHK13S-90L	1-13	3/64-1/2	90	63.5	BA2BTC0008201A
BA2CT40224202A	CAT40xGHK16S-95L	2.5-16	3/32-5/8	95	63.5	
BA2CT50223202A	CAT50xGHK13S-90L	1-13	3/64-1/2	90	98.425	
BA2CT50224202A	CAT50xGHK16S-95L	2.5-16	3/32-5/8	95	98.425	

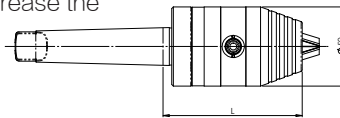
HEX KEY DRILL CHUCK Arbor Type

MT (Morse Taper)



Application / 產品適用

- Arbor structure makes its performance perfect for drilling press and machine center.
- Fine components ensure the tolerance and accuracy well.
- The benefit of titanium jaws is to increase the intensity and wear-resistance.



Code No. 型號	TYPE 規格	夾持範圍 Capacity		L	Spanner No. 扳手編號	Weight (g) 重量
		mm	inch			
BA2MT02223201A	MT2xGHK13S-88	1-13	3/64-1/2	88	BA2BTC0008201A	1330
BA2MT02224201A	MT2xGHK16S-93	2.5-16	3/32-5/8	93		1390
BA2MT03223201A	MT3xGHK13S-88	1-13	3/64-1/2	88		1380
BA2MT03224201A	MT3xGHK16S-93	2.5-16	3/32-5/8	93		1360
BA2MT04223201A	MT4xGHK13S-89	1-13	3/64-1/2	89		1600
BA2MT04224201A	MT4xGHK16S-94	2.5-16	3/32-5/8	94		1830

* Custom-built products are available on request.

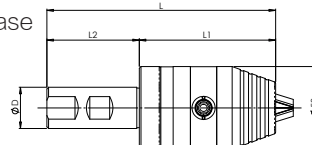
HEX KEY DRILL CHUCK Arbor Type (DIN1835_B)

D(Straight Shank)



Application / 產品適用

- Arbor structure makes its performance perfect for drilling press and machine center.
- Fine components ensure the tolerance and accuracy well.
- The benefit of titanium jaws is to increase the intensity and wear-resistance.

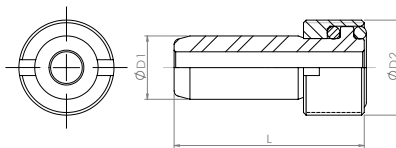


Code No. 型號	TYPE 規格	夾持範圍 Capacity		L	L1	L2	ΦD	Spanner No. 扳手編號	Weight (g) 重量
		mm	inch						
BA2DD20223201A	D20BxGHK13S-83	1-13	3/64-1/2	133	83	50	20	BA2BTC0008201A	1230
BA2DD20224201A	D20BxGHK16S-88	2.5-16	3/32-5/8	138	88	50	20		1240
BA2DD25223201A	D25BxGHK13S-83	1-13	3/64-1/2	139	83	56	25		
BA2DD25224201A	D25BxGHK16S-88	2.5-16	3/32-5/8	144	88	56	25		
BA2DD32223201A	D32BxGHK13S-83	1-13	3/64-1/2	143	83	60	32		
BA2DD32224201A	D32BxGHK16S-88	2.5-16	3/32-5/8	148	88	60	32		

* Custom-built products are available on request.

Coolant Pipe

冷卻導管

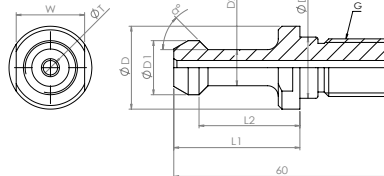


Code No. 型號	HSK NO.	$\Phi D1$	$\Phi D2$	L
BE846H201A	HSK40A	8.0	M12xP1.0	29.5
BE846H301A	HSK50A	10.0	M16xP1.0	33.0
BE846H401A	HSK63A	12.0	M18xP1.0	36.5
BE846H501A	HSK80A	14.0	M20xP1.5	40.0
BE846H601A	HSK100A	16.0	M24xP1.5	44.0
BE846H701A	HSK125A	18.0	M30xP1.5	48.0

BT/Coolant Thru-Hole Models

Pull Stud 拉栓

BT水孔型

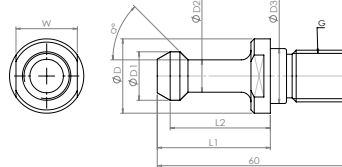


Code No. 型號	Type 規格 BT-a'	ΦT	W	L	L1	L2	ΦD	$\Phi D1$	$\Phi D2$	$\Phi D3$	G
BE812BW01A	BT30-45° W	2x3	13	43	23	18	16.5	11	7	12.5	M12xP1.75
BE812BW02A	BT30-60° W	2x3									
BE812BW03A	BT30-90° W	2x3									
BE812BW04A	BT40-45° W	4	19	60	35	28	23	15	10	17	M16xP2.0
BE812BW05A	BT40-60° W	4									
BE812BW06A	BT40-90° W	4									
BE812BW14A	BT40-45° W	5									
BE812BW15A	BT40-60° W	5	30	85	45	35	38	23	17	25	M24xP3.0
BE812BW07A	BT50-45° W	7									
BE812BW08A	BT50-60° W	7									
BE812BW09A	BT50-90° W	7									

BT/Threading Ground Models

Pull Stud 拉栓

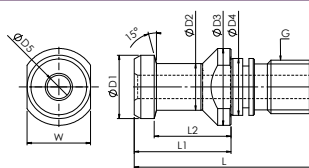
BT磨牙型



Code No. 型號	Type 規格 BT-a'	ΦT	W	L	L1	L2	ΦD	$\Phi D1$	$\Phi D2$	$\Phi D3$	G
BE812BG01A	BT30-45° G	13	13	43	23	18	16.5	11	7	12.5	M12xP1.75
BE812BG02A	BT30-60° G										
BE812BG03A	BT30-90° G										
BE812BG04A	BT40-45° G	19	19	60	35	28	23	15	10	17	M16xP2.0
BE812BG05A	BT40-60° G										
BE812BG06A	BT40-90° G										
BE812BG07A	BT50-45° G										
BE812BG08A	BT50-60° G	30	30	85	45	35	38	23	17	25	M24xP3.0
BE812BG09A	BT50-90° G										
BE812BG11A	BT45-45° G										
BE812BG11A	BT45-45° G	24	24	70	40	31	29.5	19	14	21	M20xP2.5

DIN A Type/ Coolant Thru-Hole Models DIN A型(水孔型)

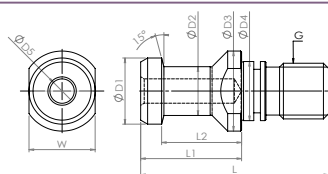
Pull Stud 拉栓



Code No. 型號	Type 規格	W	L	L1	L2	ΦD1	ΦD2	ΦD3	ΦD4	ΦD5	G
BE812DA01A	DIN30A	14	44	24	19	13	9	17	13	3	M12xP1.75
BE812DA02A	DIN40A	19	54	26	20	19	14	23	17	7	M16x2.0
BE812DA03A	DNI40-A-L	19	54	29	23	19	14	23	17	7	
BE812DA04A	DIN50A	30	74	34	25	28	21	36	25	11.5	M24xP3.0

DIN B Type / Blind-Hole DIN B型(盲孔)

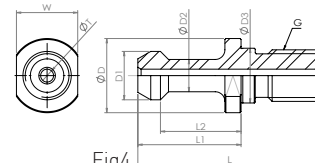
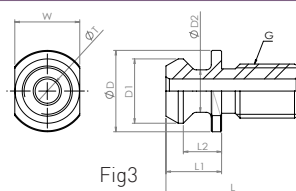
Pull Stud 拉栓



Code No. 型號	Type 規格	W	L	L1	L2	ΦD1	ΦD2	ΦD3	ΦD4	ΦD5	G
BE812DB01A	DIN30B	14	44	24	19	13	9	17	13	3	M12xP1.75
BE812DB02A	DIN40B	19	54	26	20	19	14	23	17	7	M16x2.0
BE812DB04A	DNI40-B-L	19	54	29	23	19	14	23	17	7	
BE812DA03A	DIN50B	30	74	34	25	28	21	36	25	11.5	M24xP3.0

CAT Standard Models CAT標準型

Pull Stud 拉栓



Inch 英吋

Fig1

Fig2

Fig3

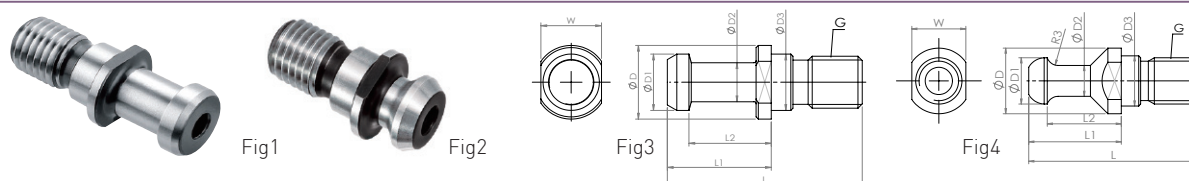
Fig4

Code No. 型號	Type 規格	ØT	W	L	L1	L2	ØD	ØD1	ØD2	ØD3	G	Fig
BE812CT01A	CAT40-45°-ANSI	0.281	0.75	1.5	0.64	0.44	0.94	0.74	0.49	-	5/8"	1
BE812CT02A	CAT50-45°-ANSI	0.468	1.25	2.3	1	0.7	1.44	1.14	0.82	-	1"	
BE812CT11A	CAT40-ANSI-PB	-	0.75	1.5	0.64	0.44	0.94	0.74	0.49	-	5/8"	
BE812CT12A	CAT50-ANSI-PB	-	1.25	2.3	1	0.7	1.44	1.14	0.82	-	1"	
BE812CT21A	CAT40-45°	-	0.75	2.25	1.266	0.99	0.91	0.59	0.394	-	5/8"	
BE812CT22A	CAT40-60°	-	0.75	2.25	1.266	0.99	0.91	0.59	0.394	-	5/8"	
BE812CT23A	CAT40-90°	-	0.75	2.25	1.266	0.99	0.91	0.59	0.394	-	5/8"	
BE812CT24A	CAT50-45°	-	1.25	3.094	1.772	1.386	1.496	0.906	0.669	-	1"	
BE812CT25A	CAT50-60°	-	1.25	3.094	1.772	1.386	1.496	0.906	0.669	-	1"	
BE812CT26A	CAT50-90°	-	1.25	3.094	1.772	1.386	1.496	0.906	0.669	-	1"	
BE812CT03A	CAT40-45°-M16	-	0.75	2.244	1.26(32)	0.984	0.91	0.59	0.394	17	M16xP2.0	2
BE812CT32A	CAT40-60°-M	-										
BE812CT33A	CAT40-90°-M	-										
BE812CT34A	CAT40-45°-MW	0.157										
BE812CT35A	CAT40-60°-MW											
BE812CT36A	CAT40-90°-MW											

ISO Type

ISO A / ISO B / ISO / ISO-R

Pull Stud 拉栓

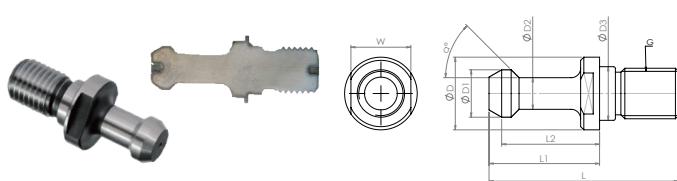


Code No. 型號	Type 規格	ØT	W	L	L1	L2	ØD	ØD1	ØD2	ØD3	G	Fig
BE812SA01A	ISO40-A	7	19	54	26	20	23	19	14	17	M16xP2.0	1
BE812SA02A	ISO50-A	11.5	30	74	34	25	36	28	21	25	M24xP3.0	
BE812SB01A	ISO40-B	7.3	19	44.5	16.4	11.15	22.5	18.95	12.95	17	M16xP2.0	2
BE812SB02A	ISO50-B	11.5	30	65.5	25.5	17.95	37	29.1	19.6	25	M24xP3.0	
BE812SO02A	ISO20	-	10	26	12	9	11.4	9	6	8.5	M8xP1.25	3
BE812SO03A	ISO25	-	10	32	16	11.6	12	10	7	9	M8xP1.25	
BE812SO04A	ISO30	-	14	45	24	19	17	13	9	13	M12xP1.75	
BE812SR04A	ISO-30-R3	-	14	44	24	19.2	17	12	8	13	M12xP1.75	

BT(S) Power Type

強力型拉栓

Pull Stud 拉栓



-190° cryogenic treatment.
High hardness.
High tensile.

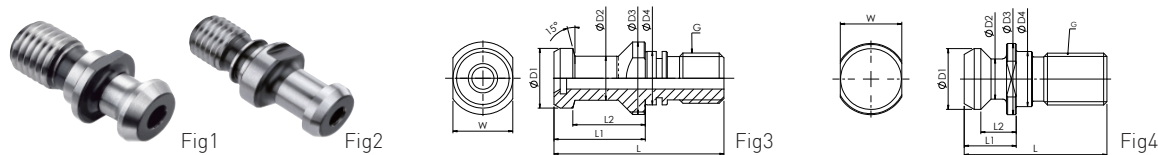
強力型拉栓
破層分布穩定
本產品經過 -190°超冷處理
硬度增加 具有高拉力

Code No. 型號	Type 規格	W	L	L1	L2	ØD	ØD1	ØD2	ØD3	G
BE815BS01A	BT30-45° S	13	43	23	18	16.5	11	7	12.5	M12xP1.75
BE815BS02A	BT30-60° S									
BE815BS03A	BT40-45° S	19	60	35	28	23	15	10	17	M16xP2.0
BE815BS04A	BT40-60° S									
BE816SD01A	BT30-45° SK	13	43	23	18	16.5	11	7	12.5	M12xP1.75
BE816SD02A	BT40-45° SK	19	60	35	28	23	15	10	17	M16xP2.0

DIN / JIS Type

DIN & JIS6339 & BT CAT MAZAK Type

Pull Stud 拉栓



Code No. 型號	Type 規格	W	L	L1	L2	ØD1	ØD2	ØD3	ØD4	ØT 水孔	Ød5	G	Fig
BE812D003A	DNI40-A-L-00	19	54	29	23	19	14	23	17	-	-	M16xP2.0	3
BE813JS01A	JIS 6339-40PB	19	54	29	23	19	14	23	17	-	-	M16xP2.0	
BE813JS03A	JIS 6339-30PB	13	43	23.4	18.4	12	8	16.5	12.5	-	-	M12xP1.75	1
BE813JS04A	JIS 6339-50PB	30	74	34	25	28	21	38	25	-	-	M24xP3.0	
BE813JS02A	JIS 6339-40P	19	54	29	23	19	14	23	17	7	-	M16xP2.0	
BE813JS06A	JIS 6339-30P	13	43	23.4	18.4	12	8	16.5	12.5	4	-	M12xP1.75	
BE813JS07A	JIS 6339-50P	30	74	34	25	28	21	38	25	10	-	M24xP3.0	2
BE813MW02A	BT40-45MAZAK	19	44.1	19.1	14	18.8	12.45	22	17	7	-	M16xP2.0	
BE813MW01A	BT50-45MAZAK	30	65.2	25.1	17.58	28.95	20.83	37	25	10	16	M24xP3.0	
BE813MW03A	BT40-45PBMAZAK	19	44.1	19.1	14	18.8	12.45	22	17	-	-	M16xP2.0	4
BE813MW04A	BT50-45PBMAZAK	30	65.2	25.1	17.58	28.95	20.83	37	25	-	-	M24xP3.0	
BE813MW05A	CAT40PB-MAZAK	19	41.1	16.1	11	18.8	12.45	22	17	-	-	M16xP2.0	

ER SPRING COLLET SYSTEM

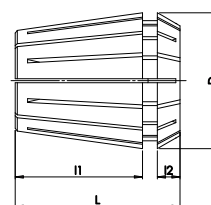
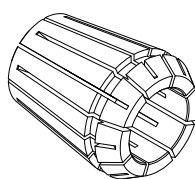
彈性筒夾 DIN 6499

■ Application / 產品適用

- It is applied for a variety of processing including drilling, milling, tapping and grinding.
- 它適用於各種的加工，包含鑽孔，銑床，攻牙和研磨。

Toolholder not included

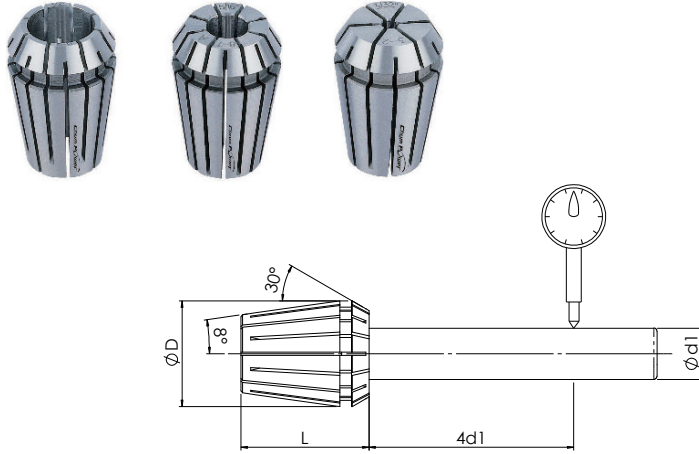
不含刀把



Code No. 型號	Type 規格	Collect 筒夾	D	L	l1	l2
BE8000100A	ER8×9	5, 4.5, 4, 3.5, 3, 2.5, 2, 1.5, 1	8.5	13.5	10.8	1.5
BE8000200A	ER11×7	7, 6, 5, 4, 3, 2, 1	11.5	18	13.5	2.5
BE8000300A	ER11×13	7, 6.5, 6, 5.5, 5, 4.5, 4, 3.5, 3, 2.5, 2, 1.5, 1	11.5	18	13.5	2.5
BE8000400A	ER16×8	10, 9, 8, 7, 6, 5, 4, 3	17	27	20.8	4
BE8000500A	ER16×10	10, 9, 8, 7, 6, 5, 4, 3, 2, 1	17	27	20.8	4
BE8000600A	ER20×10	13, 12, 11, 10, 9, 8, 7, 6, 5, 4	21	31	23.9	4.8
BE8000700A	ER20×12	13, 12, 11, 10, 9, 8, 7, 6, 5, 4, 3, 2	21	31	23.9	4.8
BE8000800A	ER25×7	13, 12, 11, 10, 9, 8, 7, 6, 5, 4, 3, 2	26	35	25.9	5
BE8000900A	ER25×15	16, 15, 14, 13, 12, 11, 10, 9, 8, 7, 6, 5, 4, 3, 2	26	35	25.9	5
BE8001000A	ER32×6	20, 16, 12, 10, 8, 6	33	40	30.9	5.5
BE8001100A	ER32×11	20, 18, 16, 15, 13, 12, 10, 8, 6, 5, 4	33	40	30.9	5.5
BE8001200A	ER32×18	20, 19, 18, 17, 16, 15, 14, 13, 12, 11, 10, 9, 8, 7, 6, 5, 4, 3	33	40	30.9	5.5
BE8001300A	ER40×7	25, 20, 16, 12, 10, 8, 6	41	46	34.9	7
BE8001400A	ER40×15	26, 25, 24, 23, 22, 21, 20, 19, 18, 17, 16, 15, 14, 13, 12, 10, 8, 6, 5, 4	41	46	34.9	7
BE8001500A	ER40×23	26, 25, 24, 23, 22, 21, 20, 19, 18, 17, 16, 15, 14, 13, 12, 11, 10, 9, 8, 7, 6, 5, 4	41	46	34.9	7
BE8001600A	ER50×12	34, 32, 30, 28, 26, 24, 22, 20, 18, 16, 14, 12	52	60	46	8.5

ER SPRING COLLET SYSTEM

彈性筒夾 DIN 6499(DIN ISO 15488)



Type	ØD	L
ER08	8.5	13.5
ER11	11.5	18
ER16	17	27
ER20	21	31
ER25	26	35
ER32	33	40
ER40	41	46
ER50	52	60

Runout accuracy 0.02mm . Standard	Type 規格	Runout accuracy 0.01mm A class	Runout accuracy 0.005mm AA class	Type 規格
Code No. 型號		Code No. 型號	Code No. 型號	
BE8000101A	ER8(Ø1.0-0.5)	BE8100101A	-	-
BE8000102A	ER8(Ø1.5-1.0)	BE8100102A	-	-
BE8000103A	ER8(Ø2.0-1.5)	BE8100103A	-	-
BE8000104A	ER8(Ø2.5-2.0)	BE8100104A	-	-
BE8000105A	ER8(Ø3.0-2.5)	BE8100105A	-	-
BE8000106A	ER8(Ø3.5-3.0)	BE8100106A	-	-
BE8000107A	ER8(Ø4.0-3.5)	BE8100107A	-	-
BE8000108A	ER8(Ø4.5-4.0)	BE8100108A	-	-
BE8000109A	ER8(Ø5.0-4.5)	BE8100109A	-	-
BE8000301A	ER11(Ø1.0-0.5)	BE8100301A	-	-
BE8000302A	ER11(Ø1.5-1.0)	BE8100302A	-	-
BE8000303A	ER11(Ø2.0-1.5)	BE8100303A	BE8200301A	ER11(Ø2.0)
BE8000304A	ER11(Ø2.5-2.0)	BE8100304A	BE8200302A	ER11(Ø2.5)
BE8000305A	ER11(Ø3.0-2.5)	BE8100305A	BE8200303A	ER11(Ø3.0)
BE8000306A	ER11(Ø3.5-3.0)	BE8100306A	BE8200304A	ER11(Ø3.5)
BE8000307A	ER11(Ø4.0-3.5)	BE8100307A	BE8200305A	ER11(Ø4.0)
BE8000308A	ER11(Ø4.5-4.0)	BE8100308A	BE8200306A	ER11(Ø4.5)
BE8000309A	ER11(Ø5.0-4.5)	BE8100309A	BE8200307A	ER11(Ø5.0)
BE8000310A	ER11(Ø5.5-5.0)	BE8100310A	BE8200308A	ER11(Ø5.5)
BE8000311A	ER11(Ø6.0-5.5)	BE8100311A	BE8200309A	ER11(Ø6.0)
BE8000312A	ER11(Ø6.5-6.0)	BE8100312A	BE8200310A	ER11(Ø6.5)
BE8000313A	ER11(Ø7.0-6.5)	BE8100313A	BE8200311A	ER11(Ø7.0)
BE8000501A	ER16(Ø1.0-0.5)	BE8100501A	-	-
BE8000502A	ER16(Ø1.5-1.0)	BE8100502A	-	-
BE8000503A	ER16(Ø2.0-1.5)	BE8100503A	BE8200501A	ER16(Ø2.0)
BE8000504A	ER16(Ø2.5-2.0)	BE8100504A	-	-
BE8000505A	ER16(Ø3.0-2.5)	BE8100505A	BE8200502A	ER16(Ø3.0)
BE8000506A	ER16(Ø3.5-3.0)	BE8100506A	-	-
BE8000507A	ER16(Ø4.0-3.5)	BE8100507A	BE8200503A	ER16(Ø4.0)
BE8000508A	ER16(Ø4.5-4.0)	BE8100508A	-	-
BE8000509A	ER16(Ø5.0-4.5)	BE8100509A	BE8200504A	ER16(Ø5.0)
BE8000510A	ER16(Ø5.5-5.0)	BE8100510A	-	-
BE8000511A	ER16(Ø6.0-5.5)	BE8100511A	BE8200505A	ER16(Ø6.0)
BE8000512A	ER16(Ø6.5-6.0)	BE8100512A	-	-
BE8000513A	ER16(Ø7.0-6.5)	BE8100513A	BE8200506A	ER16(Ø7.0)
BE8000514A	ER16(Ø7.5-7.0)	BE8100514A	-	-
BE8000515A	ER16(Ø8.0-7.5)	BE8100515A	BE8200507A	ER16(Ø8.0)

ER SPRING COLLET SYSTEM

彈性筒夾 DIN 6499(DIN ISO 15488)

Runout accuracy 0.02mm . Standard	Type 規格	Runout accuracy 0.01mm A class	Runout accuracy 0.005mm AA class	Type 規格
Code No. 型號		Code No. 型號	Code No. 型號	
BE8000516A	ER16(Ø8.5-8.0)	BE8100516A	-	-
BE8000517A	ER16(Ø9.0-8.5)	BE8100517A	BE8200508A	ER16(Ø9.0)
BE8000518A	ER16(Ø9.5-9.0)	BE8100518A	-	-
BE8000519A	ER16(Ø10.0-9.5)	BE8100519A	BE8200509A	ER16(Ø10.0)
BE8000701A	ER20(Ø1.0-0.5)	BE8100701A	-	-
BE8000702A	ER20(Ø1.5-1.0)	BE8100702A	-	-
BE8000703A	ER20(Ø2.0-1.5)	BE8100703A	BE8200701A	ER20(Ø2.0)
BE8000704A	ER20(Ø2.5-2.0)	BE8100704A	-	-
BE8000705A	ER20(Ø3.0-2.5)	BE8100705A	BE8200702A	ER20(Ø3.0)
BE8000706A	ER20(Ø3.5-3.0)	BE8100706A	-	-
BE8000707A	ER20(Ø4.0-3.5)	BE8100707A	BE8200703A	ER20(Ø4.0)
BE8000708A	ER20(Ø4.5-4.0)	BE8100708A	-	-
BE8000709A	ER20(Ø5.0-4.5)	BE8100709A	BE8200704A	ER20(Ø5.0)
BE8000710A	ER20(Ø5.5-5.0)	BE8100710A	-	-
BE8000711A	ER20(Ø6.0-5.5)	BE8100711A	BE8200705A	ER20(Ø6.0)
BE8000712A	ER20(Ø6.5-6.0)	BE8100712A	-	-
BE8000713A	ER20(Ø7.0-6.5)	BE8100713A	BE8200706A	ER20(Ø7.0)
BE8000714A	ER20(Ø7.5-7.0)	BE8100714A	-	-
BE8000715A	ER20(Ø8.0-7.5)	BE8100715A	BE8200707A	ER20(Ø8.0)
BE8000716A	ER20(Ø8.5-8.0)	BE8100716A	-	-
BE8000717A	ER20(Ø9.0-8.5)	BE8100717A	BE8200708A	ER20(Ø9.0)
BE8000718A	ER20(Ø9.5-9.0)	BE8100718A	-	-
BE8000719A	ER20(Ø10.0-9.5)	BE8100719A	BE8200709A	ER20(Ø10.0)
BE8000720A	ER20(Ø10.5-10.0)	BE8100720A	-	-
BE8000721A	ER20(Ø11.0-10.5)	BE8100721A	BE8200710A	ER20(Ø11.0)
BE8000722A	ER20(Ø11.5-11.0)	BE8100722A	-	-
BE8000723A	ER20(Ø12.0-11.5)	BE8100723A	BE8200711A	ER20(Ø12.0)
BE8000724A	ER20(Ø12.5-12.0)	BE8100724A	-	-
BE8000725A	ER20(Ø13.0-12.5)	BE8100725A	BE8200712A	ER20(Ø13.0)
BE8000901A	ER25(Ø1.0-0.5)	-	-	-
BE8000902A	ER25(Ø1.5-1.0)	-	-	-
BE8000903A	ER25(Ø2.0-1.0)	BE8100903A	BE8200901A	ER25(Ø2.0)
BE8000904A	ER25(Ø3.0-2.0)	BE8100904A	BE8200902A	ER25(Ø3.0)
BE8000905A	ER25(Ø4.0-3.0)	BE8100905A	BE8200903A	ER25(Ø4.0)
BE8000906A	ER25(Ø5.0-4.0)	BE8100906A	BE8200904A	ER25(Ø5.0)
BE8000907A	ER25(Ø6.0-5.0)	BE8100907A	BE8200905A	ER25(Ø6.0)
BE8000908A	ER25(Ø7.0-6.0)	BE8100908A	BE8200906A	ER25(Ø7.0)
BE8000909A	ER25(Ø8.0-7.0)	BE8100909A	BE8200907A	ER25(Ø8.0)
BE8000910A	ER25(Ø9.0-8.0)	BE8100910A	BE8200908A	ER25(Ø9.0)
BE8000911A	ER25(Ø10.0-9.0)	BE8100911A	BE8200909A	ER25(Ø10.0)
BE8000912A	ER25(Ø11.0-10.0)	BE8100912A	BE8200910A	ER25(Ø11.0)
BE8000913A	ER25(Ø12.0-11.0)	BE8100913A	BE8200911A	ER25(Ø12.0)
BE8000914A	ER25(Ø13.0-12.0)	BE8100914A	BE8200912A	ER25(Ø13.0)
BE8000915A	ER25(Ø14.0-13.0)	BE8100915A	BE8200913A	ER25(Ø14.0)
BE8000916A	ER25(Ø15.0-14.0)	BE8100916A	BE8200914A	ER25(Ø15.0)
BE8000917A	ER25(Ø16.0-15.0)	BE8100917A	BE8200915A	ER25(Ø16.0)
BE8001101A	ER32(Ø2.0-1.0)	-	-	-
BE8001102A	ER32(Ø3.0-2.0)	BE8101102A	BE8201101A	ER32(Ø3.0)
BE8001103A	ER32(Ø4.0-3.0)	BE8101103A	BE8201102A	ER32(Ø4.0)
BE8001104A	ER32(Ø5.0-4.0)	BE8101104A	BE8201103A	ER32(Ø5.0)
BE8001105A	ER32(Ø6.0-5.0)	BE8101105A	BE8201104A	ER32(Ø6.0)
BE8001106A	ER32(Ø7.0-6.0)	BE8101106A	BE8201105A	ER32(Ø7.0)
BE8001107A	ER32(Ø8.0-7.0)	BE8101107A	BE8201106A	ER32(Ø8.0)
BE8001108A	ER32(Ø9.0-8.0)	BE8101108A	BE8201107A	ER32(Ø9.0)
BE8001109A	ER32(Ø10.0-9.0)	BE8101109A	BE8201108A	ER32(Ø10.0)
BE8001110A	ER32(Ø11.0-10.0)	BE8101110A	BE8201109A	ER32(Ø11.0)

ER SPRING COLLET SYSTEM

彈性筒夾 DIN 6499(DIN ISO 15488)

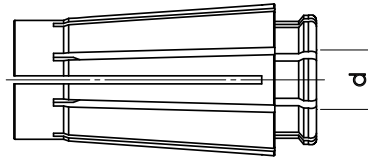
Runout accuracy 0.02mm . Standard	Type 規格	Runout accuracy 0.01mm A class	Runout accuracy 0.005mm AA class	Type 規格
Code No. 型號		Code No. 型號	Code No. 型號	
BE8001111A	ER32(Ø12.0-11.0)	BE8101111A	BE8201110A	ER32(Ø12.0)
BE8001112A	ER32(Ø13.0-12.0)	BE8101112A	BE8201111A	ER32(Ø13.0)
BE8001113A	ER32(Ø14.0-13.0)	BE8101113A	BE8201112A	ER32(Ø14.0)
BE8001114A	ER32(Ø15.0-14.0)	BE8101114A	BE8201113A	ER32(Ø15.0)
BE8001115A	ER32(Ø16.0-15.0)	BE8101115A	BE8201114A	ER32(Ø16.0)
BE8001116A	ER32(Ø17.0-16.0)	BE8101116A	BE8201115A	ER32(Ø17.0)
BE8001117A	ER32(Ø18.0-17.0)	BE8101117A	BE8201116A	ER32(Ø18.0)
BE8001118A	ER32(Ø19.0-18.0)	BE8101118A	BE8201117A	ER32(Ø19.0)
BE8001119A	ER32(Ø20.0-19.0)	BE8101119A	BE8201118A	ER32(Ø20.0)
BE8001301A	ER40(Ø3.0-2.0)	BE8101301A	-	-
BE8001302A	ER40(Ø4.0-3.0)	BE8101302A	BE8201301A	ER40(Ø4.0)
BE8001303A	ER40(Ø5.0-4.0)	BE8101303A	BE8201302A	ER40(Ø5.0)
BE8001304A	ER40(Ø6.0-5.0)	BE8101304A	BE8201303A	ER40(Ø6.0)
BE8001305A	ER40(Ø7.0-6.0)	BE8101305A	BE8201304A	ER40(Ø7.0)
BE8001306A	ER40(Ø8.0-7.0)	BE8101306A	BE8201305A	ER40(Ø8.0)
BE8001307A	ER40(Ø9.0-8.0)	BE8101307A	BE8201306A	ER40(Ø9.0)
BE8001308A	ER40(Ø10.0-9.0)	BE8101308A	BE8201307A	ER40(Ø10.0)
BE8001309A	ER40(Ø11.0-10.0)	BE8101309A	BE8201308A	ER40(Ø11.0)
BE8001310A	ER40(Ø12.0-11.0)	BE8101310A	BE8201309A	ER40(Ø12.0)
BE8001311A	ER40(Ø13.0-12.0)	BE8101311A	BE8201310A	ER40(Ø13.0)
BE8001312A	ER40(Ø14.0-13.0)	BE8101312A	BE8201311A	ER40(Ø14.0)
BE8001313A	ER40(Ø15.0-14.0)	BE8101313A	BE8201312A	ER40(Ø15.0)
BE8001314A	ER40(Ø16.0-15.0)	BE8101314A	BE8201313A	ER40(Ø16.0)
BE8001315A	ER40(Ø17.0-16.0)	BE8101315A	BE8201314A	ER40(Ø17.0)
BE8001316A	ER40(Ø18.0-17.0)	BE8101316A	BE8201315A	ER40(Ø18.0)
BE8001317A	ER40(Ø19.0-18.0)	BE8101317A	BE8201316A	ER40(Ø19.0)
BE8001318A	ER40(Ø20.0-19.0)	BE8101318A	BE8201317A	ER40(Ø20.0)
BE8001319A	ER40(Ø21.0-20.0)	BE8101319A	BE8201318A	ER40(Ø21.0)
BE8001320A	ER40(Ø22.0-21.0)	BE8101320A	BE8201319A	ER40(Ø22.0)
BE8001321A	ER40(Ø23.0-22.0)	BE8101321A	BE8201320A	ER40(Ø23.0)
BE8001322A	ER40(Ø24.0-23.0)			
BE8001323A	ER40(Ø25.0-24.0)			
BE8001324A	ER40(Ø26.0-25.0)			
BE8001501A	ER50(Ø6.0-5.0)			
BE8001502A	ER50(Ø7.0-6.0)			
BE8001503A	ER50(Ø8.0-7.0)			
BE8001504A	ER50(Ø9.0-8.0)			
BE8001505A	ER50(Ø10.0-9.0)			
BE8001506A	ER50(Ø11.0-10.0)			
BE8001507A	ER50(Ø12.0-10.0)			
BE8001508A	ER50(Ø14.0-12.0)			
BE8001509A	ER50(Ø16.0-14.0)			
BE8001510A	ER50(Ø18.0-16.0)			
BE8001511A	ER50(Ø20.0-18.0)			
BE8001512A	ER50(Ø22.0-20.0)			
BE8001513A	ER50(Ø24.0-22.0)			
BE8001514A	ER50(Ø26.0-24.0)			
BE8001515A	ER50(Ø28.0-26.0)			
BE8001516A	ER50(Ø30.0-28.0)			
BE8001517A	ER50(Ø32.0-30.0)			
BE8001518A	ER50(Ø34.0-32.0)			

SK SPRING COLLET SYSTEM

彈性筒夾 DIN 6499

■ Application / 產品適用

- It is applied for a variety of processing including drilling, milling, tapping and grinding.
- 它適用於各種的加工，包含鑽孔，銑床，攻牙和研磨。



Type	ØD	L
SK06	10.5	25
SK10	15.5	30.5
SK13	20	39
SK16	24.5	45
SK20	28.5	54
SK25	35.5	57

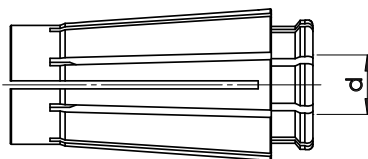
Runout accuracy 0.01mm A class	Runout accuracy 0.005mm AA class	Type 規格	Runout accuracy 0.01mm A class	Runout accuracy 0.005mm AA class	Type 規格
Code No. 型號	Code No. 型號		Code No. 型號	Code No. 型號	
BE8102101A	-	SK6-Ø2.0(Ø2.0-1.75)	-	BE8202720A	SK13-Ø9.5(Ø9.5-9.0)
BE8102102A	-	SK6-Ø2.5(Ø2.5-2.25)	-	BE8202721A	SK13-Ø10.0(Ø10.0-9.5)
BE8102103A	BE8202101A	SK6-Ø3.0(Ø3.0-2.75)	-	BE8202722A	SK13-Ø10.5(Ø10.5-10.0)
BE8102104A	BE8202102A	SK6-Ø3.5(Ø3.5-3.0)	-	BE8202723A	SK13-Ø11.0(Ø11.0-10.5)
BE8102105A	BE8202103A	SK6-Ø4.0(Ø4.0-3.5)	-	BE8202724A	SK13-Ø11.5(Ø11.5-11.0)
BE8102106A	BE8202104A	SK6-Ø4.5(Ø4.5-4.0)	-	BE8202725A	SK13-Ø12.0(Ø12.0-11.5)
BE8102107A	BE8202105A	SK6-Ø5.0(Ø5.0-4.5)	-	BE8202726A	SK13-Ø12.5(Ø12.5-12.0)
BE8102108A	BE8202106A	SK6-Ø5.5(Ø5.5-5.0)	-	BE8202727A	SK13-Ø13.0(Ø13.0-12.5)
BE8102109A	BE8202107A	SK6-Ø6.0(Ø6.0-5.5)	BE8102501A	BE8202501A	SK16-Ø3.0(Ø3.0-2.75)
BE8102301A	-	SK10-Ø2.0(Ø2.0-1.75)	BE8102502A	BE8202502A	SK16-Ø3.5(Ø3.5-3.0)
BE8102302A	-	SK10-Ø2.5(Ø2.5-2.25)	BE8102503A	BE8202503A	SK16-Ø4.0(Ø4.0-3.5)
BE8102303A	BE8202301A	SK10-Ø3.0(Ø3.0-2.75)	BE8102504A	BE8202504A	SK16-Ø4.5(Ø4.5-4.0)
BE8102304A	BE8202302A	SK10-Ø3.5(Ø3.5-3.0)	BE8102505A	BE8202505A	SK16-Ø5.0(Ø5.0-4.5)
BE8102305A	BE8202303A	SK10-Ø4.0(Ø4.0-3.5)	BE8102506A	BE8202506A	SK16-Ø5.5(Ø5.5-5.0)
BE8102306A	BE8202304A	SK10-Ø4.5(Ø4.5-4.0)	BE8102507A	BE8202507A	SK16-Ø6.0(Ø6.0-5.5)
BE8102307A	BE8202305A	SK10-Ø5.0(Ø5.0-4.5)	BE8102508A	BE8202508A	SK16-Ø6.5(Ø6.5-6.0)
BE8102308A	BE8202306A	SK10-Ø5.5(Ø5.5-5.0)	BE8102509A	BE8202509A	SK16-Ø7.0(Ø7.0-6.5)
BE8102309A	BE8202307A	SK10-Ø6.0(Ø6.0-5.5)	BE8102510A	BE8202510A	SK16-Ø7.5(Ø7.5-7.0)
BE8102310A	BE8202308A	SK10-Ø6.5(Ø6.5-6.0)	BE8102511A	BE8202511A	SK16-Ø8.0(Ø8.0-7.5)
BE8102311A	BE8202309A	SK10-Ø7.0(Ø7.0-6.5)	BE8102512A	BE8202512A	SK16-Ø8.5(Ø8.5-8.0)
BE8102312A	BE8202310A	SK10-Ø7.5(Ø7.5-7.0)	BE8102513A	BE8202513A	SK16-Ø9.0(Ø9.0-8.5)
BE8102313A	BE8202311A	SK10-Ø8.0(Ø8.0-7.5)	BE8102514A	BE8202514A	SK16-Ø9.5(Ø9.5-9.0)
BE8102314A	BE8202312A	SK10-Ø8.5(Ø8.5-8.0)	BE8102515A	BE8202515A	SK16-Ø10.0(Ø10.0-9.5)
BE8102315A	BE8202313A	SK10-Ø9.0(Ø9.0-8.5)	BE8102516A	BE8202516A	SK16-Ø10.5(Ø10.5-10.0)
BE8102316A	BE8202314A	SK10-Ø9.5(Ø9.5-9.0)	BE8102517A	BE8202517A	SK16-Ø11.0(Ø11.0-10.5)
BE8102317A	BE8202315A	SK10-Ø10.0(Ø10.0-9.5)	BE8102518A	BE8202518A	SK16-Ø11.5(Ø11.5-11.0)
-	BE8202707A	SK13-Ø3.0(Ø3.0-2.75)	BE8102519A	BE8202519A	SK16-Ø12.0(Ø12.0-11.5)
-	BE8202708A	SK13-Ø3.5(Ø3.5-3.0)	BE8102520A	BE8202520A	SK16-Ø12.5(Ø12.5-12.0)
-	BE8202709A	SK13-Ø4.0(Ø4.0-3.5)	BE8102521A	BE8202521A	SK16-Ø13.0(Ø13.0-12.5)
-	BE8202710A	SK13-Ø4.5(Ø4.5-4.0)	BE8102522A	BE8202522A	SK16-Ø13.5(Ø13.5-13.0)
-	BE8202711A	SK13-Ø5.0(Ø5.0-4.5)	BE8102523A	BE8202523A	SK16-Ø14.0(Ø14.0-13.5)
-	BE8202712A	SK13-Ø5.5(Ø5.5-5.0)	BE8102524A	BE8202524A	SK16-Ø14.5(Ø14.5-14.0)
-	BE8202713A	SK13-Ø6.0(Ø6.0-5.5)	BE8102525A	BE8202525A	SK16-Ø15.0(Ø15.0-14.5)
-	BE8202714A	SK13-Ø6.5(Ø6.5-6.0)	BE8102526A	BE8202526A	SK16-Ø15.5(Ø15.5-15.0)
-	BE8202715A	SK13-Ø7.0(Ø7.0-6.5)	BE8102527A	BE8202527A	SK16-Ø16.0(Ø16.0-15.5)
-	BE8202716A	SK13-Ø7.5(Ø7.5-7.0)	BE8102901A	BE8202901A	SK20-Ø3.0(Ø3.0-2.75)
-	BE8202717A	SK13-Ø8.0(Ø8.0-7.5)	-	BE8202902A	SK20-Ø3.5(Ø3.5-3.0)
-	BE8202718A	SK13-Ø8.5(Ø8.5-8.0)	BE8102902A	BE8202903A	SK20-Ø4.0(Ø4.0-3.5)
-	BE8202719A	SK13-Ø9.0(Ø9.0-8.5)	-	BE8202904A	SK20-Ø4.5(Ø4.5-4.0)

SK SPRING COLLET SYSTEM

彈性筒夾 DIN 6499

■ Application / 產品適用

- It is applied for a variety of processing including drilling, milling, tapping and grinding.
- 它適用於各種的加工，包含鑽孔，銑床，攻牙和研磨。



Type	ØD	L
SK06	10.5	25
SK10	15.5	30.5
SK13	20	39
SK16	24.5	45
SK20	28.5	54
SK25	35.5	57

Runout accuracy 0.01mm A class	Runout accuracy 0.005mm AA class	Type 規格
Code No. 型號	Code No. 型號	
BE8102903A	BE8202905A	SK20-Ø5.0(Ø5.0-4.5)
-	BE8202906A	SK20-Ø5.5(Ø5.5-5.0)
BE8102904A	BE8202907A	SK20-Ø6.0(Ø6.0-5.5)
BE8102905A	BE8202908A	SK20-Ø6.5(Ø6.5-6.0)
BE8102906A	BE8202909A	SK20-Ø7.0(Ø7.0-6.5)
BE8102907A	BE8202910A	SK20-Ø7.5(Ø7.5-7.0)
BE8102908A	BE8202911A	SK20-Ø8.0(Ø8.0-7.5)
BE8102909A	BE8202912A	SK20-Ø8.5(Ø8.5-8.0)
BE8102910A	BE8202913A	SK20-Ø9.0(Ø9.0-8.5)
BE8102911A	BE8202914A	SK20-Ø9.5(Ø9.5-9.0)
BE8102912A	BE8202915A	SK20-Ø10.0(Ø10.0-9.5)
BE8102913A	BE8202916A	SK20-Ø10.5(Ø10.5-10.0)
BE8102914A	BE8202917A	SK20-Ø11.0(Ø11.0-10.5)
BE8102915A	BE8202918A	SK20-Ø11.5(Ø11.5-11.0)
BE8102916A	BE8202919A	SK20-Ø12.0(Ø12.0-11.5)
BE8102917A	BE8202920A	SK20-Ø12.5(Ø12.5-12.0)
BE8102918A	BE8202921A	SK20-Ø13.0(Ø13.0-12.5)
BE8102919A	BE8202922A	SK20-Ø13.5(Ø13.5-13.0)
BE8102920A	BE8202923A	SK20-Ø14.0(Ø14.0-13.5)
BE8102921A	BE8202924A	SK20-Ø14.5(Ø14.5-14.0)
BE8102922A	BE8202925A	SK20-Ø15.0(Ø15.0-14.5)
BE8102923A	BE8202926A	SK20-Ø15.5(Ø15.5-15.0)
BE8102924A	BE8202927A	SK20-Ø16.0(Ø16.0-15.5)
BE8102925A	BE8202928A	SK20-Ø16.5(Ø16.5-16.0)
BE8102926A	BE8202929A	SK20-Ø17.0(Ø17.0-16.5)
BE8102927A	BE8202930A	SK20-Ø17.5(Ø17.5-17.0)
BE8102928A	BE8202931A	SK20-Ø18.0(Ø18.0-17.5)
BE8102929A	BE8202932A	SK20-Ø18.5(Ø18.5-18.0)
BE8102930A	BE8202933A	SK20-Ø19.0(Ø19.0-18.5)
BE8102931A	BE8202934A	SK20-Ø19.5(Ø19.5-19.0)
BE8102932A	BE8202935A	SK20-Ø20.0(Ø20.0-19.5)
-	BE8203101A	SK25-Ø3.0(Ø3.0-2.75)
-	BE8203102A	SK25-Ø3.5(Ø3.5-3.0)
-	BE8203103A	SK25-Ø4.0(Ø4.0-3.5)
-	BE8203104A	SK25-Ø4.5(Ø4.5-4.0)
-	BE8203105A	SK25-Ø5.0(Ø5.0-4.5)
-	BE8203106A	SK25-Ø5.5(Ø5.5-5.0)
BE8103101A	BE8203107A	SK25-Ø6.0(Ø6.0-5.5)
-	BE8203108A	SK25-Ø6.5(Ø6.5-6.0)

Runout accuracy 0.01mm A class	Runout accuracy 0.005mm AA class	Type 規格
Code No. 型號	Code No. 型號	
BE8103102A	BE8203109A	SK25-Ø7.0(Ø7.0-6.5)
-	BE8203110A	SK25-Ø7.5(Ø7.5-7.0)
BE8103103A	BE8203111A	SK25-Ø8.0(Ø8.0-7.5)
-	BE8203112A	SK25-Ø8.5(Ø8.5-8.0)
BE8103104A	BE8203113A	SK25-Ø9.0(Ø9.0-8.5)
-	BE8203114A	SK25-Ø9.5(Ø9.5-9.0)
BE8103105A	BE8203115A	SK25-Ø10.0(Ø10.0-9.5)
-	BE8203116A	SK25-Ø10.5(Ø10.5-10.0)
BE8103106A	BE8203117A	SK25-Ø11.0(Ø11.0-10.5)
-	BE8203118A	SK25-Ø11.5(Ø11.5-11.0)
BE8103107A	BE8203119A	SK25-Ø12.0(Ø12.0-11.5)
-	BE8203120A	SK25-Ø12.5(Ø12.5-12.0)
BE8103108A	BE8203121A	SK25-Ø13.0(Ø13.0-12.5)
-	BE8203122A	SK25-Ø13.5(Ø13.5-13.0)
BE8103109A	BE8203123A	SK25-Ø14.0(Ø14.0-13.5)
-	BE8203124A	SK25-Ø14.5(Ø14.5-14.0)
BE8103110A	BE8203125A	SK25-Ø15.0(Ø15.0-14.5)
-	BE8203126A	SK25-Ø15.5(Ø15.5-15.0)
BE8103111A	BE8203127A	SK25-Ø16.0(Ø16.0-15.5)
-	BE8203128A	SK25-Ø16.5(Ø16.5-16.0)
BE8103112A	BE8203129A	SK25-Ø17.0(Ø17.0-16.5)
-	BE8203130A	SK25-Ø17.5(Ø17.5-17.0)
BE8103113A	BE8203131A	SK25-Ø18.0(Ø18.0-17.5)
-	BE8203132A	SK25-Ø18.5(Ø18.5-18.0)
BE8103114A	BE8203133A	SK25-Ø19.0(Ø19.0-18.5)
-	BE8203134A	SK25-Ø19.5(Ø19.5-19.0)
BE8103115A	BE8203135A	SK25-Ø20.0(Ø20.0-19.5)
-	BE8203136A	SK25-Ø20.5(Ø20.5-20.0)
BE8103116A	BE8203137A	SK25-Ø21.0(Ø21.0-20.5)
-	BE8203138A	SK25-Ø21.5(Ø21.5-21.0)
BE8103117A	BE8203139A	SK25-Ø22.0(Ø22.0-21.5)
-	BE8203140A	SK25-Ø22.5(Ø22.5-22.0)
BE8103118A	BE8203141A	SK25-Ø23.0(Ø23.0-22.5)
-	BE8203142A	SK25-Ø23.5(Ø23.5-23.0)
BE8103119A	BE8203143A	SK25-Ø24.0(Ø24.0-23.5)
-	BE8203144A	SK25-Ø24.5(Ø24.5-24.0)
BE8103120A	BE8203145A	SK25-Ø25.0(Ø25.0-24.5)
BE8103121A	BE8203146A	SK25-Ø25.4(Ø25.4-25.0)

ER/CL COOLANT COLLET & ERS METALLIC SEALED COLLET SYSTEM

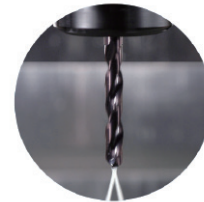
止水筒夾 DIN 6499(DIN ISO15488)



Fig1



Fig2



Code No. 型號	Runout accuracy 0.02mm (Fig1)	Code No. 型號	Runout accuracy 0.01mm (Fig2)
	Type 規格 ER/CL COOLANT COLLET 止水筒夾 (冷卻) at 4*D1 Length		Type 規格 ERS METALLIC SEALED COLLET 止水筒夾 (直溝) at 4*D1 Length
BE8006201A	ERC16-Ø3.0	BE8016201A	ERS16-Ø3.0
BE8006202A	-	BE8016202A	ERS16-Ø3.5
BE8006203A	ERC16-Ø4.0	BE8016203A	ERS16-Ø4.0
BE8006204A	-	BE8016204A	ERS16-Ø4.5
BE8006205A	ERC16-Ø5.0	BE8016205A	ERS16-Ø5.0
BE8006206A	-	BE8016206A	ERS16-Ø5.5
BE8006207A	ERC16-Ø6.0	BE8016207A	ERS16-Ø6.0
BE8006208A	-	BE8016208A	ERS16-Ø6.5
BE8006209A	ERC16-Ø7.0	BE8016209A	ERS16-Ø7.0
BE8006210A	-	BE8016210A	ERS16-Ø7.5
BE8006211A	ERC16-Ø8.0	BE8016211A	ERS16-Ø8.0
BE8006212A	-	BE8016212A	ERS16-Ø8.5
BE8006213A	ERC16-Ø9.0	BE8016213A	ERS16-Ø9.0
BE8006214A	-	BE8016214A	ERS16-Ø9.5
BE8006215A	ERC16-Ø10.0	BE8016215A	ERS16-Ø10.0
BE8006301A	ERC20-Ø3.0	BE8016301A	ERS20-Ø3.0
BE8006302A	-	BE8016302A	ERS20-Ø3.5
BE8006303A	ERC20-Ø4.0	BE8016303A	ERS20-Ø4.0
BE8006304A	-	BE8016304A	ERS20-Ø4.5
BE8006305A	ERC20-Ø5.0	BE8016305A	ERS20-Ø5.0
BE8006306A	-	BE8016306A	ERS20-Ø5.5
BE8006307A	ERC20-Ø6.0	BE8016307A	ERS20-Ø6.0
BE8006308A	-	BE8016308A	ERS20-Ø6.5
BE8006309A	ERC20-Ø7.0	BE8016309A	ERS20-Ø7.0
BE8006310A	-	BE8016310A	ERS20-Ø7.5
BE8006311A	ERC20-Ø8.0	BE8016311A	ERS20-Ø8.0
BE8006312A	-	BE8016312A	ERS20-Ø8.5
BE8006313A	ERC20-Ø9.0	BE8016313A	ERS20-Ø9.0
BE8006314A	-	BE8016314A	ERS20-Ø9.5
BE8006315A	ERC20-Ø10.0	BE8016315A	ERS20-Ø10.0
BE8006316A	-	BE8016316A	ERS20-Ø10.5
BE8006317A	ERC20-Ø11.0	BE8016317A	ERS20-Ø11.0
BE8006318A	-	BE8016318A	ERS20-Ø11.5
BE8006319A	ERC20-Ø12.0	BE8016319A	ERS20-Ø12.0
BE8006320A	-	BE8016320A	ERS20-Ø12.5
BE8006321A	ERC20-Ø13.0	BE8016321A	ERS20-Ø13.0
BE8006401A	ERC25-Ø2.0	-	-
BE8006402A	ERC25-Ø3.0	BE8016402A	ERS25-Ø3.0
BE8006403A	-	BE8016403A	ERS25-Ø3.5
BE8006404A	ERC25-Ø4.0	BE8016404A	ERS25-Ø4.0
BE8006405A	-	BE8016405A	ERS25-Ø4.5
BE8006406A	ERC25-Ø5.0	BE8016406A	ERS25-Ø5.0
BE8006407A	-	BE8016407A	ERS25-Ø5.5
BE8006408A	ERC25-Ø6.0	BE8016408A	ERS25-Ø6.0
BE8006409A	-	BE8016409A	ERS25-Ø6.5
BE8006410A	ERC25-Ø7.0	BE8016410A	ERS25-Ø7.0

Code No. 型號	Runout accuracy 0.02mm (Fig1)	Code No. 型號	Runout accuracy 0.01mm (Fig2)
	Type 規格 ER/CL COOLANT COLLET 止水筒夾 (冷卻) at 4*D1 Length		Type 規格 ERS METALLIC SEALED COLLET 止水筒夾 (直溝) at 4*D1 Length
BE8006411A	-	BE8016411A	ERS25-Ø7.5
BE8006412A	ERC25-Ø8.0	BE8016412A	ERS25-Ø8.0
BE8006413A	-	BE8016413A	ERS25-Ø8.5
BE8006414A	ERC25-Ø9.0	BE8016414A	ERS25-Ø9.0
BE8006415A	-	BE8016415A	ERS25-Ø9.5
BE8006416A	ERC25-Ø10.0	BE8016416A	ERS25-Ø10.0
BE8006417A	-	BE8016417A	ERS25-Ø10.5
BE8006418A	ERC25-Ø11.0	BE8016418A	ERS25-Ø11.0
BE8006419A	-	BE8016419A	ERS25-Ø11.5
BE8006420A	ERC25-Ø12.0	BE8016420A	ERS25-Ø12.0
BE8006421A	-	BE8016421A	ERS25-Ø12.5
BE8006422A	ERC25-Ø13.0	BE8016422A	ERS25-Ø13.0
BE8006423A	-	BE8016423A	ERS25-Ø13.5
BE8006424A	ERC25-Ø14.0	BE8016424A	ERS25-Ø14.0
BE8006425A	-	BE8016425A	ERS25-Ø14.5
BE8006426A	ERC25-Ø15.0	BE8016426A	ERS25-Ø15.0
BE8006427A	-	BE8016427A	ERS25-Ø15.5
BE8006428A	ERC25-Ø16.0	BE8016428A	ERS25-Ø16.0
BE8006500A	-	BE8016500A	ERS32-Ø3.0
BE8006501A	-	BE8016501A	ERS32-Ø3.5
BE8006502A	ERC32-Ø4.0	BE8016502A	ERS32-Ø4.0
BE8006503A	-	BE8016503A	ERS32-Ø4.5
BE8006504A	ERC32-Ø5.0	BE8016504A	ERS32-Ø5.0
BE8006505A	-	BE8016505A	ERS32-Ø5.5
BE8006506A	ERC32-Ø6.0	BE8016506A	ERS32-Ø6.0
BE8006507A	-	BE8016507A	ERS32-Ø6.5
BE8006508A	ERC32-Ø7.0	BE8016508A	ERS32-Ø7.0
BE8006509A	-	BE8016509A	ERS32-Ø7.5
BE8006510A	ERC32-Ø8.0	BE8016510A	ERS32-Ø8.0
BE8006511A	-	BE8016511A	ERS32-Ø8.5
BE8006512A	ERC32-Ø9.0	BE8016512A	ERS32-Ø9.0
BE8006513A	-	BE8016513A	ERS32-Ø9.5
BE8006514A	ERC32-Ø10.0	BE8016514A	ERS32-Ø10.0
BE8006515A	-	BE8016515A	ERS32-Ø10.5
BE8006516A	ERC32-Ø11.0	BE8016516A	ERS32-Ø11.0
BE8006517A	-	BE8016517A	ERS32-Ø11.5
BE8006518A	ERC32-Ø12.0	BE8016518A	ERS32-Ø12.0
BE8006519A	-	BE8016519A	ERS32-Ø12.5
BE8006520A	ERC32-Ø13.0	BE8016520A	ERS32-Ø13.0
BE8006521A	-	BE8016521A	ERS32-Ø13.5
BE8006522A	ERC32-Ø14.0	BE8016522A	ERS32-Ø14.0
BE8006523A	-	BE8016523A	ERS32-Ø14.5
BE8006524A	ERC32-Ø15.0	BE8016524A	ERS32-Ø15.0
BE8006525A	-	BE8016525A	ERS32-Ø15.5
BE8006526A	ERC32-Ø16.0	BE8016526A	ERS32-Ø16.0
BE8006527A	-	BE8016527A	ERS32-Ø16.5

ER/CL COOLANT COLLET & ERS METALLIC SEALED COLLET SYSTEM 止水筒夾 DIN 6499(DIN ISO15488)



Fig1



Fig2



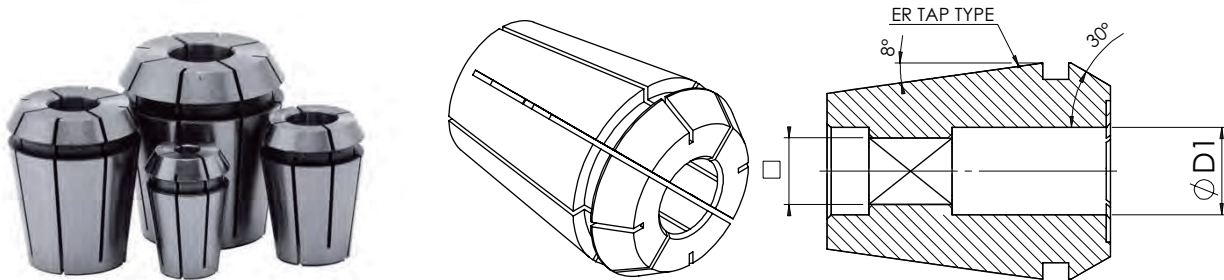
Code No. 型號	Runout accuracy 0.02mm (Fig1)	Code No. 型號	Runout accuracy 0.01mm (Fig2)
	Type 規格 ER/CL COOLANT COLLET 止水筒夾 (冷卻) at 4*D1 Length		Type 規格 ERS METALLIC SEALED COLLET 止水筒夾 (直溝) at 4*D1 Length
BE8006528A	ERC32-Ø17.0	BE8016528A	ERS32-Ø17.0
BE8006529A	-	BE8016529A	ERS32-Ø17.5
BE8006530A	ERC32-Ø18.0	BE8016530A	ERS32-Ø18.0
BE8006531A	-	BE8016531A	ERS32-Ø18.5
BE8006532A	ERC32-Ø19.0	BE8016532A	ERS32-Ø19.0
BE8006533A	-	BE8016533A	ERS32-Ø19.5
BE8006534A	ERC32-Ø20.0	BE8016534A	ERS32-Ø20.0
BE8006600A	-	BE8016600A	ERS40-Ø3.0
BE80066A0A	-	BE80166A0A	ERS40-Ø3.5
BE8006601A	ERC40-Ø4.0	BE8016601A	ERS40-Ø4.0
BE8006602A	-	BE8016602A	ERS40-Ø4.5
BE8006603A	ERC40-Ø5.0	BE8016603A	ERS40-Ø5.0
BE8006604A	-	BE8016604A	ERS40-Ø5.5
BE8006605A	ERC40-Ø6.0	BE8016605A	ERS40-Ø6.0
BE8006606A	-	BE8016606A	ERS40-Ø6.5
BE8006607A	ERC40-Ø7.0	BE8016607A	ERS40-Ø7.0
BE8006608A	-	BE8016608A	ERS40-Ø7.5
BE8006609A	ERC40-Ø8.0	BE8016609A	ERS40-Ø8.0
BE8006610A	-	BE8016610A	ERS40-Ø8.5
BE8006611A	ERC40-Ø9.0	BE8016611A	ERS40-Ø9.0
BE8006612A	-	BE8016612A	ERS40-Ø9.5
BE8006613A	ERC40-Ø10.0	BE8016613A	ERS40-Ø10.0
BE8006614A	-	BE8016614A	ERS40-Ø10.5
BE8006615A	ERC40-Ø11.0	BE8016615A	ERS40-Ø11.0
BE8006616A	-	BE8016616A	ERS40-Ø11.5
BE8006617A	ERC40-Ø12.0	BE8016617A	ERS40-Ø12.0
BE8006618A	-	BE8016618A	ERS40-Ø12.5
BE8006619A	ERC40-Ø13.0	BE8016619A	ERS40-Ø13.0
BE8006620A	-	BE8016620A	ERS40-Ø13.5
BE8006621A	ERC40-Ø14.0	BE8016621A	ERS40-Ø14.0
BE8006622A	-	BE8016622A	ERS40-Ø14.5
BE8006623A	ERC40-Ø15.0	BE8016623A	ERS40-Ø15.0
BE8006624A	-	BE8016624A	ERS40-Ø15.5
BE8006625A	ERC40-Ø16.0	BE8016625A	ERS40-Ø16.0
BE8006626A	-	BE8016626A	ERS40-Ø16.5
BE8006627A	ERC40-Ø17.0	BE8016627A	ERS40-Ø17.0
BE8006628A	-	BE8016628A	ERS40-Ø17.5
BE8006629A	ERC40-Ø18.0	BE8016629A	ERS40-Ø18.0
BE8006630A	-	BE8016630A	ERS40-Ø18.5
BE8006631A	ERC40-Ø19.0	BE8016631A	ERS40-Ø19.0
BE8006632A	-	BE8016632A	ERS40-Ø19.5
BE8006633A	ERC40-Ø20.0	BE8016633A	ERS40-Ø20.0
BE8006634A	-	BE8016634A	ERS40-Ø20.5
BE8006635A	ERC40-Ø21.0	BE8016635A	ERS40-Ø21.0
BE8006636A	-	BE8016636A	ERS40-Ø21.5
BE8006637A	ERC40-Ø22.0	BE8016637A	ERS40-Ø22.0

Code No. 型號	Runout accuracy 0.02mm (Fig1)	Code No. 型號	Runout accuracy 0.01mm (Fig2)
	Type 規格 ER/CL COOLANT COLLET 止水筒夾 (冷卻) at 4*D1 Length		Type 規格 ERS METALLIC SEALED COLLET 止水筒夾 (直溝) at 4*D1 Length
BE8006638A	-	BE8016638A	ERS40-Ø22.5
BE8006639A	ERC40-Ø23.0	BE8016639A	ERS40-Ø23.0
BE8006640A	-	BE8016640A	ERS40-Ø23.5
BE8006641A	ERC40-Ø24.0	BE8016641A	ERS40-Ø24.0
BE8006642A	-	BE8016642A	ERS40-Ø24.5
BE8006643A	ERC40-Ø25.0	BE8016643A	ERS40-Ø25.0
BE8006644A	-	BE8016644A	ERS40-Ø25.5
BE8006645A	ERC40-Ø26.0	BE8016645A	ERS40-Ø26.0

* The Other Runout accuracy 0.005mm (Fig2)

ER/ TAPPING COLLET SYSTEM

絲攻筒夾



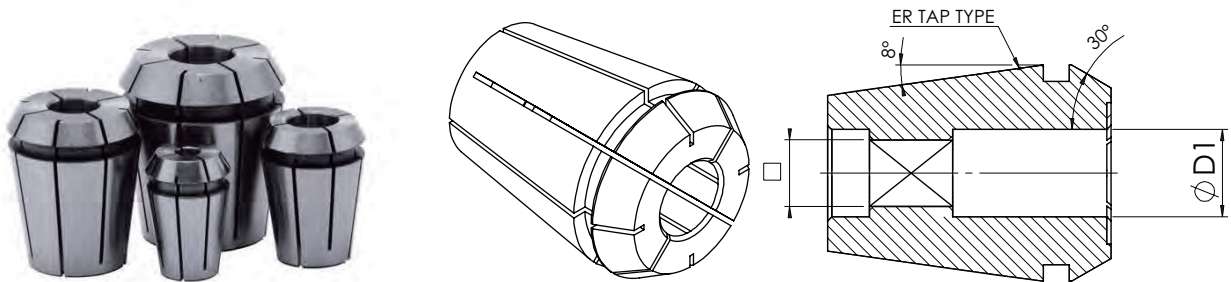
Code NO. 型號	TYPE 規格 TAP 攻牙筒夾	TAPPING TYPE			
		ØD1 柄徑	口方柄	JIS	DIN
BE8007101A	ER16	4.0	3.0	-	M3.5
BE8007102A		4.0	3.2	M3	-
BE8007103A		4.5	3.4	-	M6
BE8007104A		5.0	4.0	M4	-
BE8007105A		5.5	4.5	M5	-
BE8007106A		6.0	4.5	M6-1/4U	-
BE8007107A		6.0	4.9	-	M8
BE8007108A		6.1	5.0	5/16U	-
BE8007109A		6.2	5.0	M8	-
BE8007110A		7.0	5.5	M10-3/8U	M10
BE8007111A		8.0	6.2	7/16U	-
BE8007112A		8.5	6.5	M12	-
BE8007113A		8.0	6.0	M11-7/16U	-

Code NO. 型號	TYPE 規格 TAP 攻牙筒夾	TAPPING TYPE			
		ØD1 柄徑	口方柄	JIS	DIN
BE8007201A	ER20	4.0	3.0	-	M3.5
BE8007202A		4.0	3.2	M3	-
BE8007203A		4.5	3.4	-	M6
BE8007204A		5.0	4.0	M4	-
BE8007205A		5.5	4.5	M5	-
BE8007206A		6.0	4.5	M6-1/4U	-
BE8007207A		6.0	4.9	-	M8
BE8007208A		6.1	5.0	5/16U	-
BE8007209A		6.2	5.0	M8	-
BE8007210A		7.0	5.5	M10-3/8U	M10
BE8007211A		8.0	6.2	7/16U	-
BE8007212A		8.5	6.5	M12	-
BE8007213A		9.0	7.1	M12	1/2U
BE8007214A		10.0	8.0	M14	M10
BE8007215A		9.0	7.0	1/2U	M12

Code NO. 型號	TYPE 規格 TAP 攻牙筒夾	TAPPING TYPE			
		ØD1 柄徑	口方柄	JIS	DIN
BE8007301A	ER25	4.5	3.4	-	M6
BE8007302A		5.0	4.0	M4	-
BE8007303A		5.5	4.5	M5	-
BE8007304A		6.0	4.5	M6-1/4U	-
BE8007305A		6.0	4.9	-	M8
BE8007306A		6.1	5.0	5/16U	-
BE8007307A		6.2	5.0	M8	-
BE8007308A		7.0	5.5	M10-3/8U	M10
BE8007309A		8.0	6.2	7/16U	-
BE8007310A		8.5	6.5	M12	-
BE8007311A		9.0	7.1	1/2U	M12
BE8007312A		10.0	8.0	-	M10
BE8007313A		10.5	8.0	M14-9/16U	-
BE8007314A		11.0	9.0	-	M14
BE8007315A		12.0	9.0	5/8U	M16
BE8007316A		12.5	10.0	M16	-

ER/ TAPPING COLLET SYSTEM

絲攻筒夾

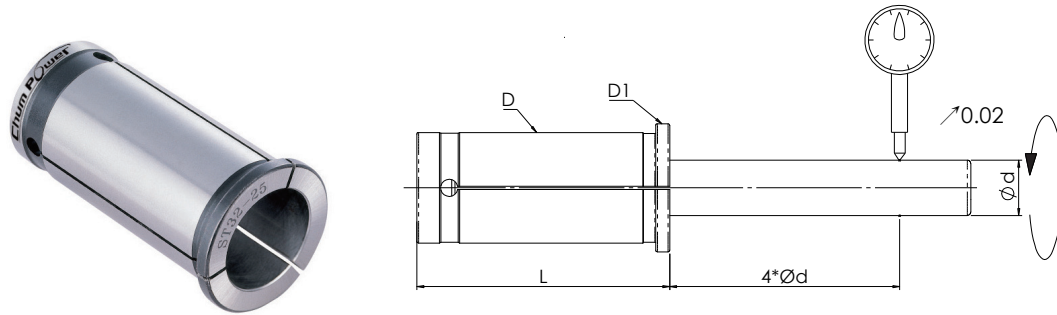


Code NO. 型號	TYPE 規格 TAP 攻牙筒夾	TAPPING TYPE			
		ØD1 柄徑	口方柄	JIS	DIN
BE8007401A	ER32	4.5	3.4	-	M6
BE8007402A		5.0	4.0	M4	-
BE8007403A		5.5	4.5	M5	-
BE8007404A		6.0	4.5	M6-1/4U	-
BE8007405A		6.0	4.9	-	M8
BE8007406A		6.1	5.0	5/16U	-
BE8007407A		6.2	5.0	M8	-
BE8007408A		7.0	5.5	M10-3/8U	M10
BE8007409A		8.0	6.2	7/16U	-
BE8007410A		8.5	6.5	M12	-
BE8007411A		9.0	7.1	1/2U	M12
BE8007412A		10.0	8.0	-	-
BE8007413A		10.5	8.0	M14-9/16U	-
BE8007414A		11.0	9.0	-	M14
BE8007415A		12.0	9.0	5/8U	M16
BE8007416A		12.5	10.0	M16	-
BE8007417A		14.0	11.0	M18-3/4U	M18
BE8007418A		15.0	12.0	M20	-
BE8007419A		16.0	12.0	-	M20
BE8007420A		17.0	13.0	M22-7/8U	-

Code NO. 型號	TYPE 規格 TAP 攻牙筒夾	TAPPING TYPE			
		ØD1 柄徑	口方柄	JIS	DIN
BE8007501A	ER40	6.0	4.5	M6-1/4U	-
BE8007502A		6.0	4.9	-	M8
BE8007503A		6.1	5.0	5/16U	-
BE8007504A		6.2	5.0	M8	-
BE8007505A		7.0	5.5	-	M10
BE8007506A		8.0	6.2	7/16U	-
BE8007507A		8.5	6.5	M12	-
BE8007508A		9.0	7.1	1/2U	M12
BE8007509A		10.0	8.0	-	-
BE8007510A		10.5	8.0	M14-9/16U	-
BE8007511A		11.0	9.0	-	M14
BE8007512A		12.0	9.0	5/8U	M16
BE8007513A		12.5	10.0	M16	-
BE8007514A		14.0	11.0	M18-3/4U	M18
BE8007515A		15.0	12.0	M20	-
BE8007516A		16.0	12.0	-	M20
BE8007517A		17.0	13.0	M22-7/8U	-
BE8007518A		18.0	14.5	-	M22
BE8007519A		19.0	15.0	M24	-
BE8007520A		20.0	15.0	M27-1U	-
BE8007521A		20.0	16.0	-	M27
BE8007522A		22.0	18.0	-	M30

STRAIGHT COLLET

直筒式彈性筒夾



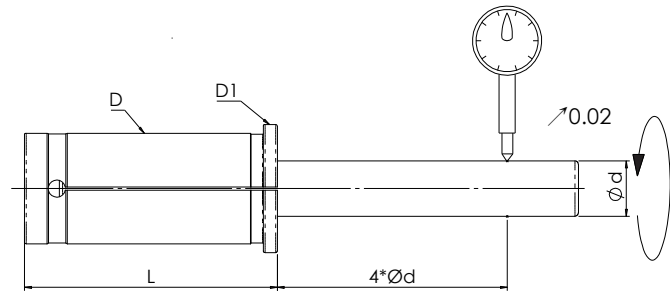
Code No. 型號	Type 規格	Φd	L	D	D1
BE8004301A	C20	3	52	20	25
BE8004302A					
BE8004303A					
BE8004304A					
BE8004305A					
BE8004306A					
BE8004307A					
BE8004308A					
BE8004309A					
BE8004310A					
BE8004311A					
BE8004312A					
BE8004313A					
BE8004314A					

Code No. 型號	Type 規格	Φd	L	D	d1
BE8004501A	C25	4	60	25	31
BE8004502A					
BE8004503A					
BE8004505A					
BE8004506A					
BE8004507A					
BE8004508A					
BE8004509A					
BE8004517A					
BE8004510A					
BE8004511A					
BE8004512A					
BE8004513A					
BE8004514A					
BE8004515A					
BE8004516A					

* 公制 ↔ 公制；公制 ↔ 英制；英制 ↔ 英制，視客戶需求

STRAIGHT COLLET

直筒式彈性筒夾

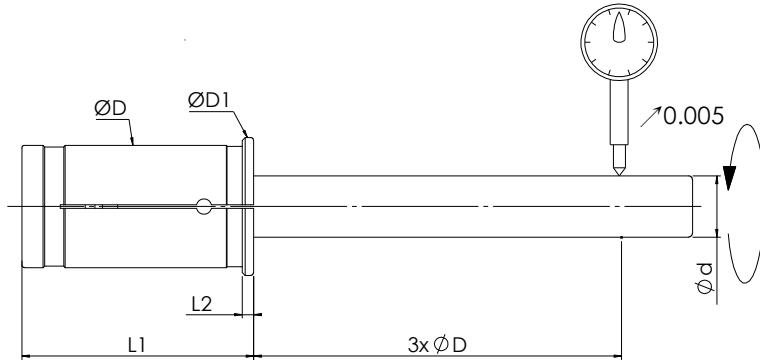


Code No. 型號	Type 規格	Φd	L	D	d1
BE8004701A	C32	3	73	32	37
BE8004702A		4			
BE8004703A		5			
BE8004704A		6			
BE8004705A		7			
BE8004706A		8			
BE8004707A		9			
BE8004708A		10			
BE8004709A		11			
BE8004710A		12			
BE8004711A		13			
BE8004712A		14			
BE8004713A		15			
BE8004714A		16			
BE8004715A		17			
BE8004716A		18			
BE8004717A		19			
BE8004718A		20			
BE8004719A		21			
BE8004720A		22			
BE8004723A	25				

Code No. 型號	Type 規格	Φd	L	D	d1
BE8004901A	C42	6	78	42	48
BE8004902A		8			
BE8004903A		10			
BE8004904A		12			
BE8004905A		14			
BE8004906A		16			
BE8004907A		18			
BE8004908A		20			
BE8004909A		22			
BE8004910A		25			
BE8004911A		32			

STRAIGHT COLLET

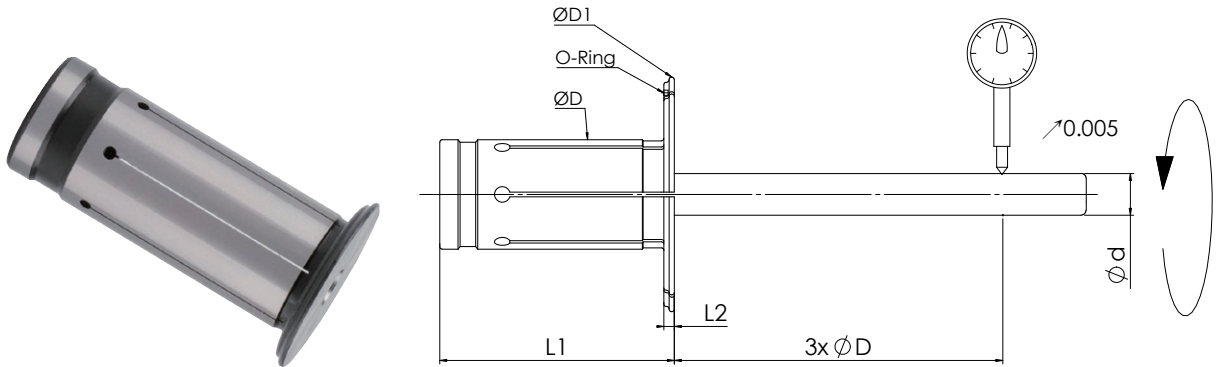
D油壓直式筒夾



Code No. 型號	Type 規格	Φd	L1	L2	ØD	ØD1
BE8400301A	D12	3	44.5	2.0	12	16
BE8400302A		4				
BE8400303A		5				
BE8400304A		6				
BE8400305A		8				
BE8400701A	D20	3	50.5	2.0	20	24
BE8400702A		4				
BE8400703A		5				
BE8400704A		6				
BE8400705A		8				
BE8400706A		10				
BE8400707A		12				
BE8400708A		14				
BE8400709A		16				
BE8400901A	D32	6	60.5	3.0	32	36
BE8400902A		8				
BE8400903A		10				
BE8400904A		12				
BE8400905A		14				
BE8400906A		16				
BE8400907A		18				
BE8400908A		20				
BE8400909A		25				

STRAIGHT COLLET

DC油壓直式筒夾

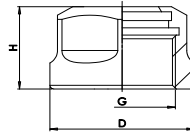


Code No. 型號	Type 規格	Φd	L1	L2	ØD	ØD1
BE8402301A	D12	3	45	2.0	21	45
BE8402302A		4				
BE8402303A		5				
BE8402304A		6				
BE8402305A		8				
BE8402701A	D20	3	50.5	2.0	29	50.5
BE8402702A		4				
BE8402703A		5				
BE8402704A		6				
BE8402705A		8				
BE8402706A		10				
BE8402707A	12					
BE8402709A	16					
BE8402901A	D32	6	60.5	3.0	39	60.5
BE8402902A		8				
BE8402903A		10				
BE8402904A		12				
BE8402906A		16				
BE8402908A		20				
BE8402909A		25				

ER & SK Nuts

ER & SK螺帽

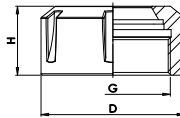
H Type



ER Hex

Code No. 型號	Spec. 規格	H	D	SW	G	Spanner No. 扳手編號
BB200ER11A001A	ER 11-H	11.5	19	17	M14×P0.75	BS2ER11020001A
BB200ER16A001A	ER 16-H	17.5	28	25	M22×P1.5	BS2ER16020001A
BB200ER20A001A	ER 20-H	19	34	30	M25×P1.5	BS2ER20020001A

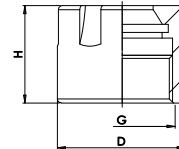
B Type



ER B

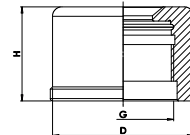
Code No. 型號	Spec. 規格	H	D	G	Spanner No. 扳手編號
BB200ER25B001A	ER 25-B	20	42	M32×P1.5	BS2ER25100001A
BB200ER32B001A	ER 32-B	24	50	M40×P1.5	BS2ER32100001A
BB200ER40B001A	ER 40-B	25	63	M50×P1.5	BS2ER40100001A
BB200ER50B001A	ER 50-B	35	78	M64×P2.0	BS2ER50100001A

S Type

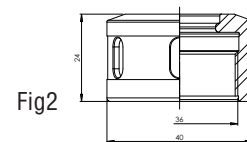
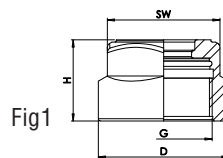


ER S

Code No. 型號	Spec. 規格	H	D	G	Spanner No. 扳手編號
BB200ER08S001A	ER 8-S	10.8	12	M10×P0.75	BE80SER08A
BB200ER11S001A	ER 11-S	12	16	M13×P0.75	BE80SER11A
BB200ER16S001A	ER 16-S	18	23	M19×P1.0	BE80SER16A
BB200ER20S001A	ER 20-S	19	28	M24×P1.0	BE80SER20A
BB200ER25S001A	ER 25-S	20	35	M30×P1.0	BE80SER25A

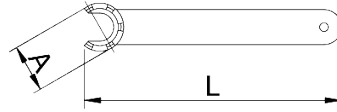


Code No. 型號	Spec. 規格	H	D	G	Spanner No. 扳手編號
BB200SK06D001A	SK 6	16.5	19.5	M15.5×P1.0	BE80DSK06A
BB200SK10D001A	SK10	20	30	M21.5×P1.0	BE80DSK10A
BB200SK16D001A	SK16	30	40	M32×P1.5	BE80DSK16A



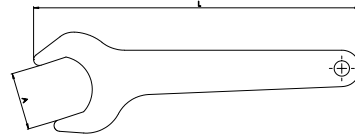
Code No. 型號	Spec. 規格	H	D	SW	G	Type	Spanner No. 扳手編號
BB200SK06A001A	SK06	15	19.5	18	M15.5×P1.0	Fig1.	BA2SK06250001A
BB200SK10A001A	SK10	17	29	25	M21.5×P1.0		BA2SK10250001A
BB200SK10C001A	SK10	17	29		M21.5×P1.0		BA2SK10260001A
BB200SK13C001A	SK13	21	33		M27×P1.0	Fig2.	BA2SK13260001A
BB200SK16C001A	SK16	24	40		M32×P1.5		BA2SK16260001A
BB200SK20C001A	SK20	24	48.5		M40×P1.0		BA2SK20260001A
BB200SK25C001A	SK25	30	55		M45×P1.5		BA2SK25260001A

ER Spanner ER板手



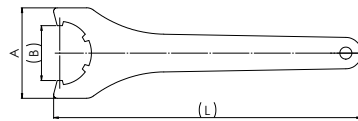
ER 小徑板手 ER S

Code No. 型號	Spec. 規格	A	L
BE80SER08A	ER8S	13	75
BE80SER11A	ER11S	17	95
BE80SER16A	ER16S	22.5	118
BE80SER20A	ER20S	28	10
BE80SER25A	ER25S	36.5	135



開口板手 ER Hex

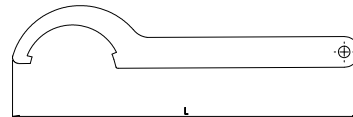
Code No. 型號	Spec. 規格	A	L
BS2ER11020001A	ER11H	17	130
BS2ER16020001A	ER16H	25	140
BS2ER20020001A	ER20H	30	170



ER 標準板手 ER B

Code No. 型號	Spec. 規格	A	(B)	(L)
BS2ER25100001A	ER25B	65	37	210
BS2ER32100001A	ER32B	75	45.5	255
BS2ER40100001A	ER40B	90	58	290
BS2ER50100001A	ER50B	110	71	350

Hook Wrench 勾板手

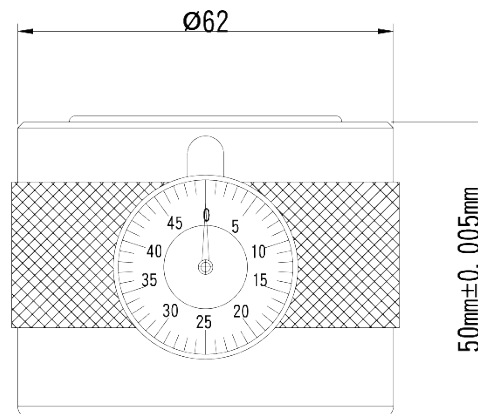


Code No. 型號	Spec. 規格	A	L
BA20C20030001B	C20	-	206
BA20C25030001B	C25	-	239
BA20C32030001B	C32	-	276
BA20C42030001B	C42	-	346
BA2SK13260001A	SK13	-	205
BA2SK16260001A	SK16	-	223
BA2SK20260001A	SK20	-	230
BA2SK25260001A	SK25	-	230

Z Axial Preset Gauge

Z軸設定器

- For setting length on machining centers/lathe centers.
- Setting height: $50.00 \pm 0.005\text{mm}$.
- Large measuring surface and easy to operate.
 - Low sprang force, May avoid the milling cutter or the drill bit breaking.
 - Easy to be calibrated by a ground parallel or gauge block.
 - Better parallelism, sensitivit, and precision for use.
 - 在電腦銑床 / 車床上設定刀長用。
 - 設計高度： $50,00 \pm 0.005\text{mm}$ 。
 - 量側面大，操作容易。
 - 彈簧力較小，可避免小銑刀或鑽頭斷裂。
 - 用研磨過的平行板，即可簡單設定。
 - 平行度及各方面使用靈敏，且精度更好。

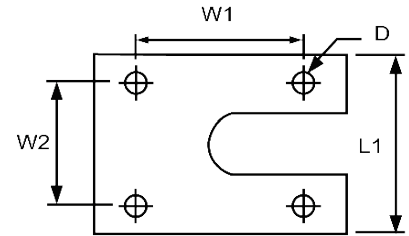
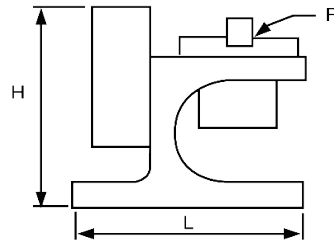


Accuracy $\pm 0.01\text{mm}$

精度 $\pm 0.01\text{mm}$

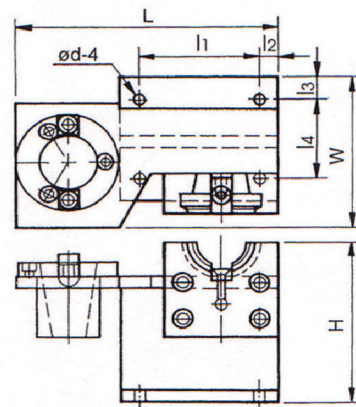
Code No. 型號	Type 規格	Height 高度 (mm)	G.W.Weight 重量 (KGS)	L×W×H	Magnetism 磁性
BTAPG845501A	ZH-50A	50.00 ± 0.005	1.2	50×63×63	0

Tool Locking Device 鎖刀座



Code No. 型號	TYPE 規格	P	L	L1	H	W1	W2	D	Weight 重量 (kg)
BTTLD845101A	BT30	BT	145	103	143	112	72	13	4.2
BTTLD845102A	BT40	BT	145	103	143	112	72	13	4.2
BTTLD845103A	BT50	BT	177	135	205	140	100	13	7.6

Tool Locking Device A Type (Cast Iron Body) 鎖刀座 A型(主體為鑄鐵)



Code No. 型號	TYPE 規格	L	l1	l2	l3	l4	H	W	N.W. 淨重 (kg)	G.W. 毛重 (kg)	Shipment Size 裝箱尺寸 (cm)
BTTLD845151A	CP-BT30A	210	95	10	15	67	130	100	3.6	3.7	22×11.5×14
BTTLD845152A	CP-BT40A	210	95	10	15	67	130	100	3.7	3.9	22×11.5×14
BTTLD845153A	CP-BT50A	275	113	20	24	105	200	150	11	11.4	29.5×17×21
BTTLD845154A	CP-DIN40A	210	95	10	15	67	130	100	3.6	3.8	22×11.5×14
BTTLD845155A	CP-DIN50A	275	113	20	24	105	200	150	10.8	11.2	29.5×17×21
BTTLD845156A	CP-CAT40A	210	95	10	15	67	130	100	3.6	3.8	22×11.5×14
BTTLD845157A	CP-CAT50A	275	113	20	24	105	200	150	10.8	11.2	29.5×17×21

Taper Wiper BT Type

清潔棒 BT型

- Cleaning chips of taper wiper is made of lambskin.
- It can clean inside slides of spindles to prevent static electricity and to extend the longevity of spindles and tapers.
 - 清潔棒的清潔片由小羊皮製成，可清理主軸內部，不傷主軸，防止靜電產生，延長主軸使用壽命。



Code No. 型號	TYPE 規格	Taper 斜度	N.W. 淨重 (kg)	G.W. 毛重 (kg)	Shipment Size 裝箱尺寸 (cm)	Remarks(Pcs/Ctn) 備註 (支 / 箱)
BTSTT000101A	W-30	#30	0.06	0.08	41×29.5×20	30
BTSTT000102A	W-40	#40	0.07	0.10	41×29.5×20	30
BTSTT000103A	W-50	#50	0.16	0.20	41×29.5×20	10
BTSTT000104A	W-30P	#30	0.06	0.08	41×29.5×20	30
BTSTT000105A	W-40P	#40	0.07	0.10	41×29.5×20	30
BTSTT000106A	W-50P	#50	0.16	0.20	41×29.5×20	10

Taper Wiper HSK Type

清潔棒 HSK型

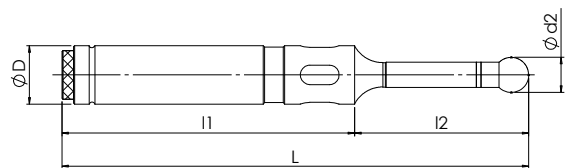
- Cleaning chips of taper wiper is made of lambskin.
- It can clean inside slides of spindles to prevent static electricity and to extend the longevity of spindles and tapers.
 - 清潔棒的清潔片由小羊皮製成，可清理主軸內部，不傷主軸，防止靜電產生，延長主軸使用壽命。



Code No. 型號	TYPE 規格	Model No. 型式	N.W. 淨重 (kg)	G.W. 毛重 (kg)	Shipment Size 裝箱尺寸 (cm)	Remarks(Pcs/Ctn) 備註 (支 / 箱)
BTSTT000201A	W-HSK40A	HSK40	0.08	0.10	41×29.5×20	30
BTSTT000202A	W-HSK50H	HSK50/HSK63F	0.08	0.12	41×29.5×20	10
BTSTT000203A	W-HSK63H	HSK63/HSK80F	0.10	0.13	41×29.5×20	10
BTSTT000204A	W-HSK100H	HSK100	0.54	0.7	41×29.5×20	3

Optical Edge Finder 光電式尋邊器

- Quickly locate work edges and save time to find positions for Milling , Lathe Machine, and other machines.
- The scope of application includes processing material edge, and measuring inside and outside diameters of work-piece efficiently.
- There is a safety spring puller, which will put a ball precisely back to the position when ball breaks away from ball seat.
- Attached 2 dry batteries to light the red lamp.
- 迅速的找出工作位置，對於銑床、車床、及其他機械設備，都能有效節省尋找位置所需時間。
- 可應用於加工件邊及內、外徑之高效率量測。
- 當鋼珠脫離時，有一個安全彈簧可精確的將其拉回原來的 位置。
- 附 2 枚 1.5V 鹼性乾電池。



Code No. 型號	TYPE D 規格	d2	L	l1	l2
BTLEF846301A	20	10	158	108	50
BTLEF846302A	32	10	158	108	50