

# EX-POWER Universal Chuck

泛用型夾頭系列

B



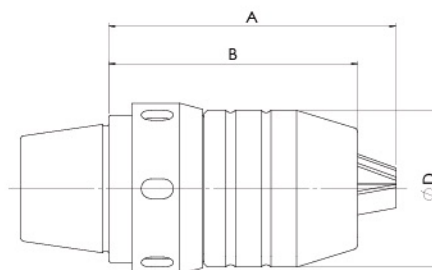
## EX-POWER 互換系列

Interchangeable Series #610

These chucks are specially designed for application in CNC drill chucks with the highest engineering standards. The female thread inside the short type BT makes it firmly screwed together with CNC machine.

此類夾頭是特別設計，應用於高工程標準的CNC鑽夾頭。

BT 短型內螺紋可與CNC車床緊密鎖上。



### Design Features

- With integrated design, the drill chuck heads once screwed together with tool holder shank will never be disengaged from it.
- Great rigidity due to the special design.
- High durability and easy to operate.
- Superb accuracy is guaranteed because of 100% inspection and strict quality control.
- All the drill chucks are capable combined with SK, ISO, BT, VDI, HSK tool holder.

### 設計特色

- 一體設計，鑽夾頭與刀把鎖緊不鬆脫。
- 特殊設計，有良好的剛性。
- 耐磨損，容易操作。
- 精度準確：經嚴格品質控管。
- 此系列所有鑽夾頭皆可適用 SK、ISO、BT、VDI、HSK 刀桿。



Fig.1



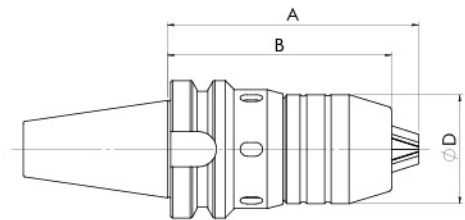
Fig.2

Fig.2

Code No. 型號	Screw & Chuck Size 螺絲 x 夾頭尺寸	Capacity 夾持範圍		Dimensions 規格		
		mm 公制	inch 英制	Close 關 A / mm	Open 開 B / mm	Outer Dia 外徑 D / mm
BA16108200001A	M8*8mm	0.3-8	1/64-5/16	71	63.8	37.5
BA16113200001A	M8*13mm	0.3-13	1/64-1/2	92	79.5	50
BA16116200001A	M8*16mm	3-16	1/8-5/8	103	91	57

\* Custom-Built products are available on request. \* 特製品可依客戶需求訂製

## EX-POWER JIS B6339/MAS 403 BT 一體式系列 Integrated / Monoblock Design Series #620



Code No. 型號	組接形式	Size 尺寸	Capacity 夾持範圍		Dimensions 規格			適用勾板手 Spanner No.
			mm 公制	inch 英制	總長	開口	外徑	
BA2BT30620001A	BT30	8mm	0.3-8	1/64-5/16	90.5	83	37.5	BA12810000001A
BA2BT30620002A	BT30	13mm	0.3-13	1/64-1/2	115	102	50	BA16013000001A
BA2BT40620001A	BT40	8mm	0.3-8	1/64-5/16	96	87	37.5	BA12810000001A
BA2BT40620002A	BT40	13mm	0.3-13	1/64-1/2	115	102	50	BA16013000001A
BA2BT40620003A	BT40	16mm	3-16	1/8-5/8	121.5	108.5	57	BA16016000001A

\* Custom-Built products are available on request. \* 特製品可依客戶需求訂製

### Design Features

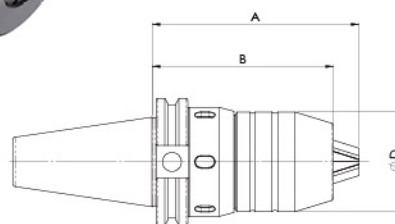
- Designed to maximize drill chuck rigidity and precision on machine centers with automatic tool changer.
- The shank and Universal Drill Chuck are combined as one body, so that the Drill Chuck will not be fallen out when heavy cutting performed.
- The drill will not be dropped out when the main spindle of machine instantly stops.
- High precision can be maintained over a long period of time.

### 設計特色

- 設計功能 – 增強鑽夾頭的堅固性及精準性，於使用綜合加工中心機的換刀系統。
- 刀柄和鑽夾頭結合為一體。即使是做重切削的加工，鑽夾頭也不會脫落。
- 即使機器主軸立即停止，刀具也不會因此脫落。
- 超過長時間的使用，此夾頭仍保持高精度。
- 能雙向轉動夾持刀具。

## EX-POWER ANSIB5.50 CAT 一體式系列

Integrated / Monoblock Design Series #620



### Design Features

- Designed to maximize drill chuck rigidity and precision on machine centers with automatic tool changer.
- The shank and Universal Drill Chuck are combined as one body, so that the Drill Chuck will not be fallen out when heavy cutting performed.
- The drill will not be dropped out when the main spindle of machine instantly stops.
- High precision can be maintained over a long period of time.

### 設計特色

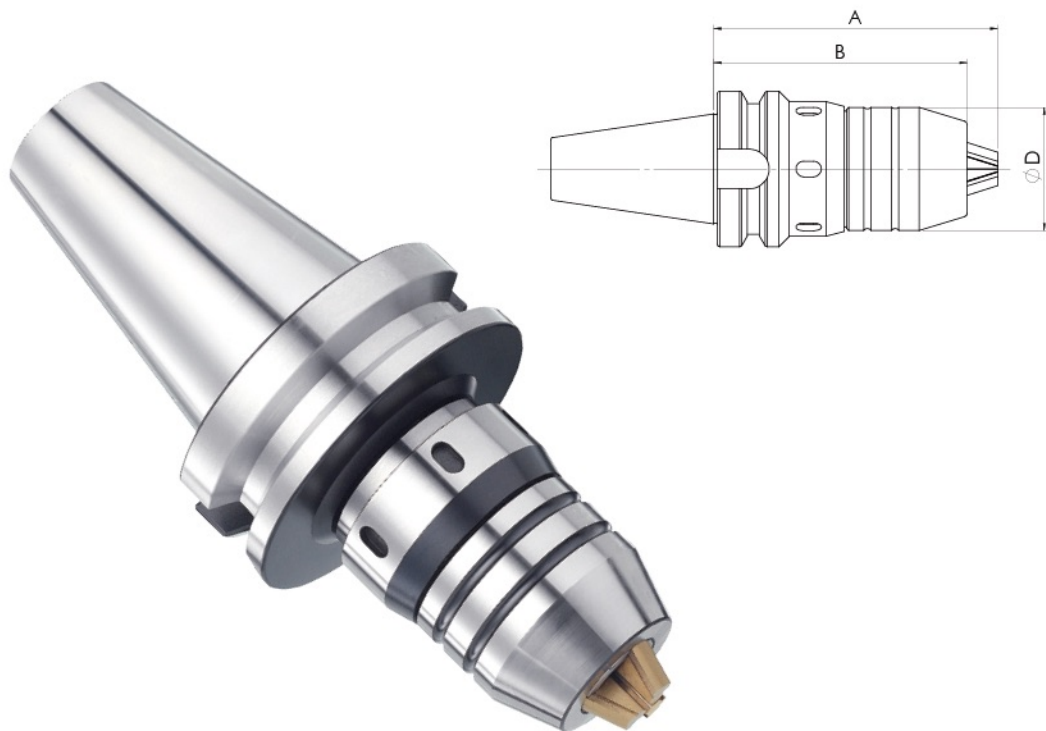
- 設計功能 – 增強鑽夾頭的堅固性及精準性，於使用綜合加工中心機的換刀系統。
- 刀柄和鑽夾頭結合為一體。即使是做重切削的加工，鑽夾頭也不會脫落。
- 即使機器主軸立即停止，刀具也不會因此脫落。
- 超過長時間的使用，此夾頭仍保持高精度。
- 能雙向轉動夾持刀具。

Code No. 型號	Mount Type 組接形式	Size 尺寸	Capacity 夾持範圍		Dimensions 規格			適用勾板手 Spanner No.
			mm 公制	inch 英制	Close 關 A / mm	Open 開 B / mm	Outer Dia 外徑 D / mm	
BA2CT40620001A	CAT40	8mm	0.3-8	1/64-5/16	74.1	81.6	37.5	BA12810000001A
BA2CT40620002A	CAT40	13mm	0.3-13	1/64-1/2	90.8	103.5	50	BA16013000001A
BA2CT40620003A	CAT40	16mm	3-16	1/8-5/8	95.6	108.3	57	BA16016000001A
BA2CT50620001A	CAT50	8mm	0.3-8	1/64-5/16	74.1	81.6	37.5	BA12810000001A
BA2CT50620002A	CAT50	13mm	0.3-13	1/64-1/2	90.8	103.5	50	BA16013000001A
BA2CT50620003A	CAT50	16mm	3-16	1/8-5/8	95.6	108.3	57	BA16016000001A

\* Custom-Built products are available on request. \* 特製品可依客戶需求訂製

## EX-POWER BT/JIS B6339 組接式系列

Screwed in One Piece #622



### Design Features

- Designed to maximize drill chuck rigidity and precision on machine centers with automatic tool changer.
- High precision can be maintained over a long period of time

### 設計特色

- 設計功能 – 增強鑽夾頭的堅固性及精準性，於使用綜合加工中心機的換刀系統。
- 超過長時間的使用，此夾頭仍保持高精度。

Code No. 型號	組接形式	Size 尺寸	Capacity 夾持範圍		Dimensions 規格			適用勾板手 Spanner No.
			mm 公制	inch 英制	總長	開口	外徑	
BA2BT40610001A	BT40	8mm	0.3-8	1/64-5/16	98	91	37.5	BA12810000001A
BA2BT50610001A	BT50	8mm	0.3-8	1/64-5/16	108.5	101	37.5	BA12810000001A
BA2BT50610002A	BT50	13mm	0.3-13	1/64-1/2	126.2	115.5	50	BA16013000001A
BA2BT50610003A	BT50	16mm	3-16	1/8-5/8	132.5	119.5	57	BA16016000001A

\* Custom-Built products are available on request. \* 特製品可依客戶需求訂製